



LRWD1 rabbit pAb

Catalog No	BYab-11017
Isotype	IgG
Reactivity	Human; Mouse
Applications	WB;IHC
Gene Name	LRWD1 ORCA
Protein Name	LRWD1
Immunogen	Synthesized peptide derived from human LRWD1 AA range: 395-445
Specificity	This antibody detects endogenous levels of LRWD1 at Human/Mouse
Formulation	Liquid in PBS containing 50% glycerol, 0.5% BSA and 0.02% sodium azide.
Source	Polyclonal, Rabbit,IgG
Purification	The antibody was affinity-purified from rabbit serum by affinity-chromatography using specific immunogen.
Dilution	WB 1:500-2000;IHC-p 1:50-300
Concentration	1 mg/ml
Purity	≥90%
Storage Stability	-20°C/1 year
Synonyms	
Observed Band	
Cell Pathway	Nucleus . Chromosome, centromere. Chromosome, telomere. Cytoplasm, cytoskeleton, microtubule organizing center, centrosome . Chromosome, centromere, kinetochore . Localizes to heterochromatin during G1 phase. Restricted to centromeres or telomeres as cells progress through S phase. When cells enter mitosis, relocalizes to centromeres. Recruitment to pericentric heterochromatin largely depends on the presence of H3K9me3.
Tissue Specificity	Testis-specific. Drastically down-regulated in testis from patients with Sertoli cell-only syndrome (SCOS).
Function	PTM:Phosphorylated upon DNA damage, probably by ATM or ATR.,similarity:Contains 3 LRR (leucine-rich) repeats.,similarity:Contains 5 WD repeats.,
Background	The protein encoded by this gene interacts with components of the origin recognition complex (ORC) and regulates the formation of the prereplicative complex. The encoded protein stabilizes the ORC and therefore aids in DNA replication. This protein is required for the G1/S phase transition of the cell cycle.

Nanjing BYabscience technology Co.,Ltd



In addition, the encoded protein binds to trimethylated histone H3 in heterochromatin and recruits the ORC and lysine methyltransferases, which help maintain the repressive heterochromatic state. Two transcript variants encoding different isoforms have been found for this gene. [provided by RefSeq, Dec 2015],

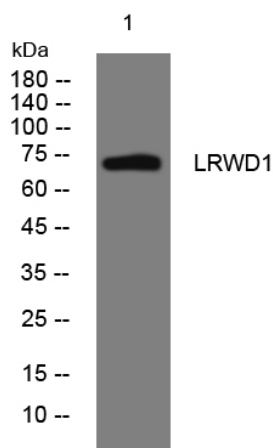
matters needing attention

Avoid repeated freezing and thawing!

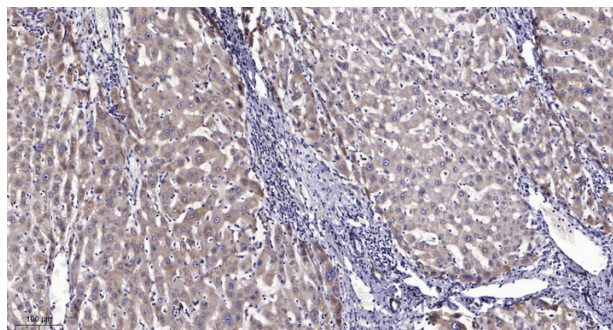
Usage suggestions

This product can be used in immunological reaction related experiments. For more information, please consult technical personnel.

Products Images



Western blot analysis of lysates from PC-12 cells, primary antibody was diluted at 1:1000, 4° over night



Immunohistochemical analysis of paraffin-embedded human liver cancer. 1, Antibody was diluted at 1:200(4° overnight). 2, Tris-EDTA, pH9.0 was used for antigen retrieval. 3, Secondary antibody was diluted at 1:200(room temperature, 45min).