



GPAA1 rabbit pAb

Catalog No	BYab-11013
Isotype	IgG
Reactivity	Human; Mouse
Applications	WB
Gene Name	GPAA1 GAA1
Protein Name	GPAA1
Immunogen	Synthesized peptide derived from human GPAA1 AA range: 111-161
Specificity	This antibody detects endogenous levels of GPAA1 at Human/Mouse
Formulation	Liquid in PBS containing 50% glycerol, 0.5% BSA and 0.02% sodium azide.
Source	Polyclonal, Rabbit,IgG
Purification	The antibody was affinity-purified from rabbit serum by affinity-chromatography using specific immunogen.
Dilution	WB 1: 500-2000
Concentration	1 mg/ml
Purity	≥90%
Storage Stability	-20°C/1 year
Synonyms	
Observed Band	
Cell Pathway	Endoplasmic reticulum membrane ; Multi-pass membrane protein .
Tissue Specificity	Ubiquitously expressed in fetal and adult tissues. Expressed at higher levels in fetal tissues than adult tissues.
Function	function:Essential for GPI-anchoring of precursor proteins but not for GPI synthesis. Acts before or during formation of the carbonyl intermediate.,pathway:Glycolipid biosynthesis; glycosylphosphatidylinositol-anchor biosynthesis.,sequence caution:Erroneous prediction from an unspliced cDNA.,subunit:Forms a complex with PIGK/GPI8, PIGT, PIGU and PIGS.,tissue specificity:Ubiquitously expressed in fetal and adult tissues. Expressed at higher levels in fetal tissues than adult tissues.,
Background	Posttranslational glycosylphosphatidylinositol (GPI) anchor attachment serves as a general mechanism for linking proteins to the cell surface membrane. The protein encoded by this gene presumably functions in GPI anchoring at the GPI transfer step. The mRNA transcript is ubiquitously expressed in both fetal and

Nanjing BYabscience technology Co.,Ltd



adult tissues. The anchor attachment protein 1 contains an N-terminal signal sequence, 1 cAMP- and cGMP-dependent protein kinase phosphorylation site, 1 leucine zipper pattern, 2 potential N-glycosylation sites, and 8 putative transmembrane domains. [provided by RefSeq, Jul 2008],

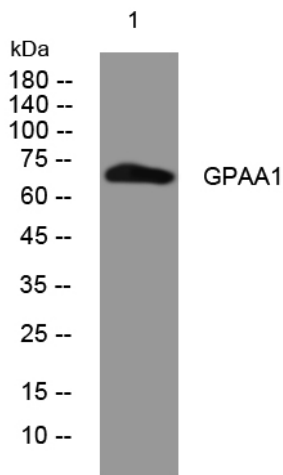
matters needing attention

Avoid repeated freezing and thawing!

Usage suggestions

This product can be used in immunological reaction related experiments. For more information, please consult technical personnel.

Products Images



Western blot analysis of lysates from KB cells, primary antibody was diluted at 1:1000, 4°over night