



SHOX2 rabbit pAb

Catalog No	BYab-10999
Isotype	IgG
Reactivity	Human; Mouse;Rat
Applications	WB;IHC;FCM
Gene Name	SHOX2 OG12X SHOT
Protein Name	SHOX2
Immunogen	Synthesized peptide derived from human SHOX2 AA range: 37-87
Specificity	This antibody detects endogenous levels of SHOX2 at Human/Mouse/Rat
Formulation	Liquid in PBS containing 50% glycerol, 0.5% BSA and 0.02% sodium azide.
Source	Polyclonal, Rabbit,IgG
Purification	The antibody was affinity-purified from rabbit serum by affinity-chromatography using specific immunogen.
Dilution	WB 1:500-2000;IHC-p 1:50-300,FCM 1:100-200
Concentration	1 mg/ml
Purity	≥90%
Storage Stability	-20°C/1 year
Synonyms	
Observed Band	
Cell Pathway	Nucleus.
Tissue Specificity	Expressed in heart, skeletal muscle, liver, lung, bone marrow fibroblast, pancreas and placenta.
Function	developmental stage:Expressed during cranofacial development as well as in heart.,function:May be a growth regulator and have a role in specifying neural systems involved in processing somatosensory information, as well as in face and body structure formation.,similarity:Belongs to the paired homeobox family. Bicoid subfamily.,similarity:Contains 1 homeobox DNA-binding domain.,similarity:Contains 1 OAR domain.,tissue specificity:Expressed in heart, skeletal muscle, liver, lung, bone marrow fibroblast, pancreas and placenta.,
Background	This gene is a member of the homeobox family of genes that encode proteins containing a 60-amino acid residue motif that represents a DNA binding domain. Homeobox genes have been characterized extensively as transcriptional regulators involved in pattern formation in both invertebrate and vertebrate

Nanjing BYabscience technology Co.,Ltd



species. Several human genetic disorders are caused by aberrations in human homeobox genes. This locus represents a pseudoautosomal homeobox gene that is thought to be responsible for idiopathic short stature, and it is implicated in the short stature phenotype of Turner syndrome patients. This gene is considered to be a candidate gene for Cornelia de Lange syndrome. Alternative splicing results in multiple transcript variants. [provided by RefSeq, Jul 2009],

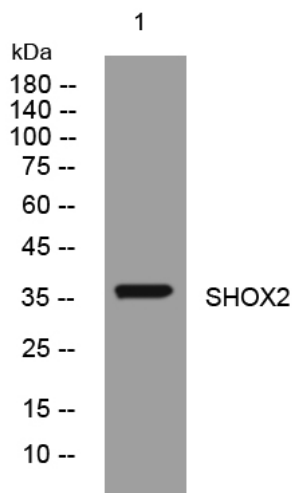
matters needing attention

Avoid repeated freezing and thawing!

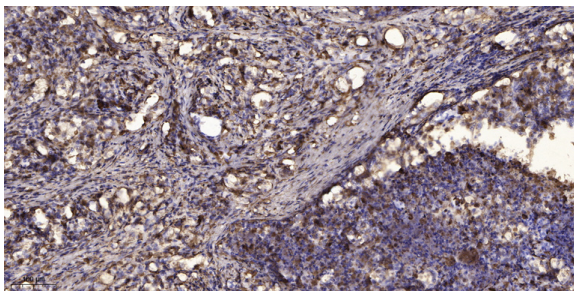
Usage suggestions

This product can be used in immunological reaction related experiments. For more information, please consult technical personnel.

Products Images



Western blot analysis of lysates from HeLa cells, primary antibody was diluted at 1:1000, 4° over night



Immunohistochemical analysis of paraffin-embedded human Squamous cell carcinoma of lung. 1, Antibody was diluted at 1:200(4° overnight). 2, Tris-EDTA,pH9.0 was used for antigen retrieval. 3,Secondary antibody was diluted at 1:200(room temperature, 45min).