



PIGL rabbit pAb

Catalog No	BYab-10993
Isotype	IgG
Reactivity	Human; Mouse;Rat
Applications	WB;IF;ELISA;IHC
Gene Name	PIGL
Protein Name	PIGL
Immunogen	Synthesized peptide derived from human PIGL AA range: 77-127
Specificity	This antibody detects endogenous levels of PIGL at Human/Mouse/Rat
Formulation	Liquid in PBS containing 50% glycerol, 0.5% BSA and 0.02% sodium azide.
Source	Polyclonal, Rabbit,IgG
Purification	The antibody was affinity-purified from rabbit serum by affinity-chromatography using specific immunogen.
Dilution	WB 1:500-2000; IF/ICC 1:50-200;ELISA 1:2000-20000;IHC-p 1:50-200
Concentration	1 mg/ml
Purity	≥90%
Storage Stability	-20°C/1 year
Synonyms	
Observed Band	
Cell Pathway	Endoplasmic reticulum membrane ; Single-pass membrane protein .
Tissue Specificity	
Function	catalytic activity:6-(N-acetyl-D-glucosaminy)-1-phosphatidyl-1D-myo-inositol + H(2)O = 6-(alpha-D-glucosaminy)-1-phosphatidyl-1D-myo-inositol + acetate.,function:Involved in the second step of GPI biosynthesis. De-N-acetylation of N-acetylglucosaminy-phosphatidylinositol.,pathway:Glycolipid biosynthesis; glycosylphosphatidylinositol-anchor biosynthesis.,similarity:Belongs to the PIGL family.,
Background	This gene encodes an enzyme that catalyzes the second step of glycosylphosphatidylinositol (GPI) biosynthesis, which is the de-N-acetylation of N-acetylglucosaminyphosphatidylinositol (GlcNAc-PI). Study of a similar rat enzyme suggests that this protein localizes to the endoplasmic reticulum.

Nanjing BYabscience technology Co.,Ltd



[provided by RefSeq, Jul 2008],

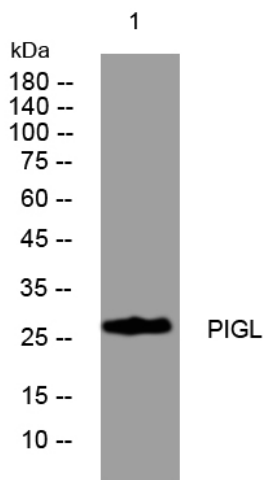
matters needing attention

Avoid repeated freezing and thawing!

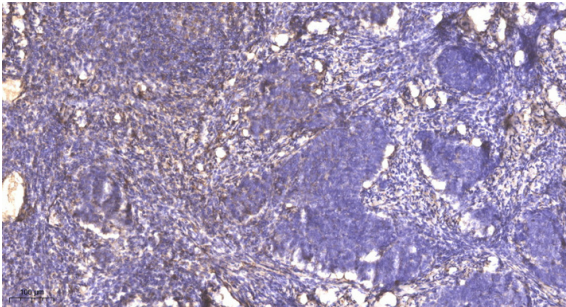
Usage suggestions

This product can be used in immunological reaction related experiments. For more information, please consult technical personnel.

Products Images



Western blot analysis of lysates from HpeG2 cells, primary antibody was diluted at 1:1000, 4° over night



Immunohistochemical analysis of paraffin-embedded human cervical carcinoma. 1, Antibody was diluted at 1:200(4° overnight). 2, Tris-EDTA,pH9.0 was used for antigen retrieval. 3,Secondary antibody was diluted at 1:200(room temperature, 45min).

Nanjing BYabscience technology Co.,Ltd