



# GG12C rabbit pAb

<b>Catalog No</b>	BYab-10986
<b>Isotype</b>	IgG
<b>Reactivity</b>	Human;Rat;Mouse;
<b>Applications</b>	WB
<b>Gene Name</b>	GAGE12B; GAGE12C; GAGE12D; GAGE12E
<b>Protein Name</b>	GG12C
<b>Immunogen</b>	Synthesized peptide derived from human GG12C AA range: 42-92
<b>Specificity</b>	This antibody detects endogenous levels of GG12C at Human
<b>Formulation</b>	Liquid in PBS containing 50% glycerol, 0.5% BSA and 0.02% sodium azide.
<b>Source</b>	Polyclonal, Rabbit,IgG
<b>Purification</b>	The antibody was affinity-purified from rabbit serum by affinity-chromatography using specific immunogen.
<b>Dilution</b>	WB 1: 500-2000
<b>Concentration</b>	1 mg/ml
<b>Purity</b>	≥90%
<b>Storage Stability</b>	-20°C/1 year
<b>Synonyms</b>	
<b>Observed Band</b>	
<b>Cell Pathway</b>	
<b>Tissue Specificity</b>	
<b>Function</b>	function:Antigen, recognized on melanoma by autologous cytolytic T-lymphocytes.,function:Antigen, recognized on melanoma by autologous cytolytic T-lymphocytes. Completely silent in normal adult tissues, except testis.,similarity:Belongs to the GAGE family.,tissue specificity:Expressed in a variety of tumor tissues but not in normal tissues, except testis.,tissue specificity:Expressed in some prostate cancer tissues but not in normal prostate tissue.,tissue specificity:Not expressed in normal tissues, except in testis, but expressed by a large proportion of tumors of various histological origins.,
<b>Background</b>	

Nanjing BYabscience technology Co.,Ltd



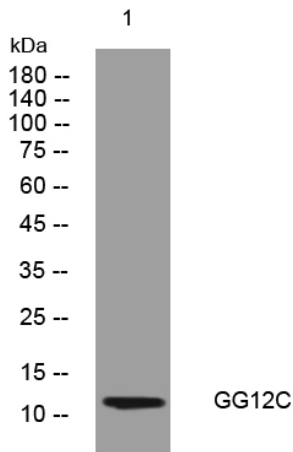
**matters needing attention**

Avoid repeated freezing and thawing!

**Usage suggestions**

This product can be used in immunological reaction related experiments. For more information, please consult technical personnel.

**Products Images**



Nanjing BYabscience technology Co.,Ltd

网址: [www.njbybio.com](http://www.njbybio.com)

官方热线: 025-5229-8998

监督电话: 15950492658