



# MD12L rabbit pAb

<b>Catalog No</b>	BYab-10972
<b>Isotype</b>	IgG
<b>Reactivity</b>	Human; Mouse
<b>Applications</b>	WB
<b>Gene Name</b>	MED12L KIAA1635 TNRC11L TRALP TRALPUSH PRO0314
<b>Protein Name</b>	MD12L
<b>Immunogen</b>	Synthesized peptide derived from human MD12L AA range: 1848-1898
<b>Specificity</b>	This antibody detects endogenous levels of MD12L at Human/Mouse
<b>Formulation</b>	Liquid in PBS containing 50% glycerol, 0.5% BSA and 0.02% sodium azide.
<b>Source</b>	Polyclonal, Rabbit,IgG
<b>Purification</b>	The antibody was affinity-purified from rabbit serum by affinity-chromatography using specific immunogen.
<b>Dilution</b>	WB 1: 500-2000
<b>Concentration</b>	1 mg/ml
<b>Purity</b>	≥90%
<b>Storage Stability</b>	-20°C/1 year
<b>Synonyms</b>	
<b>Observed Band</b>	
<b>Cell Pathway</b>	Nucleus .
<b>Tissue Specificity</b>	
<b>Function</b>	function:May be a component of the Mediator complex, a coactivator involved in the regulated transcription of nearly all RNA polymerase II-dependent genes. Mediator functions as a bridge to convey information from gene-specific regulatory proteins to the basal RNA polymerase II transcription machinery. Mediator is recruited to promoters by direct interactions with regulatory proteins and serves as a scaffold for the assembly of a functional preinitiation complex with RNA polymerase II and the general transcription factors.,sequence caution:Contaminating sequence. Sequence of unknown origin in the N-terminal part and potential poly-A sequence.,similarity:Belongs to the Mediator complex subunit 12 family.,subunit:May be a component of the Mediator complex, which is known to be composed of MED1, MED4, MED6, MED7, MED8, MED9, MED10, MED11, MED12, MED13, MED13L, MED14, MED15, MED16, MED17, ME

**Nanjing BYabscience technology Co.,Ltd**



**Background**

The protein encoded by this gene is part of the Mediator complex, which is involved in transcriptional coactivation of nearly all RNA polymerase II-dependent genes. The Mediator complex links gene-specific transcriptional activators with the basal transcription machinery. [provided by RefSeq, May 2010],

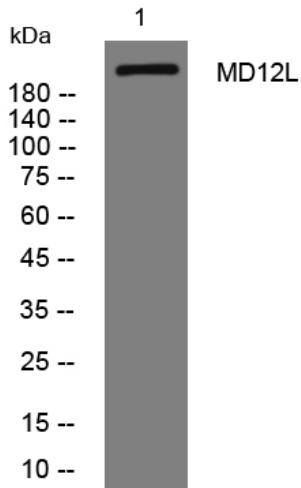
**matters needing attention**

Avoid repeated freezing and thawing!

**Usage suggestions**

This product can be used in immunological reaction related experiments. For more information, please consult technical personnel.

**Products Images**



Western blot analysis of lysates from HeLa cells, primary antibody was diluted at 1:1000, 4° over night