



LUZP1 rabbit pAb

Catalog No	BYab-10965
Isotype	IgG
Reactivity	Human; Mouse;Rat
Applications	WB
Gene Name	LUZP1
Protein Name	LUZP1
Immunogen	Synthesized peptide derived from human LUZP1 AA range: 555-605
Specificity	This antibody detects endogenous levels of LUZP1 at Human/Mouse/Rat
Formulation	Liquid in PBS containing 50% glycerol, 0.5% BSA and 0.02% sodium azide.
Source	Polyclonal, Rabbit,IgG
Purification	The antibody was affinity-purified from rabbit serum by affinity-chromatography using specific immunogen.
Dilution	WB 1: 500-2000
Concentration	1 mg/ml
Purity	≥90%
Storage Stability	-20°C/1 year
Synonyms	
Observed Band	
Cell Pathway	Nucleus. Also detected in soma and dendrites of neurons. .
Tissue Specificity	
Function	subcellular location:Also detected in soma and dendrites of neurons.,
Background	This gene encodes a protein that contains a leucine zipper motif. The exact function of the encoded protein is not known. In mice this gene affects neural tube closure. Alternative splicing results in multiple transcript variants. [provided by RefSeq, Dec 2008],
matters needing attention	Avoid repeated freezing and thawing!

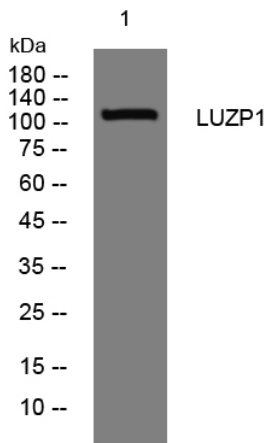
Nanjing BYabscience technology Co.,Ltd



Usage suggestions

This product can be used in immunological reaction related experiments. For more information, please consult technical personnel.

Products Images



Western blot analysis of lysates from U2OS cells, primary antibody was diluted at 1:1000, 4° over night