



S23A1 rabbit pAb

Catalog No	BYab-10958
Isotype	IgG
Reactivity	Human; Mouse;Rat
Applications	WB
Gene Name	SLC23A1 SVCT1 YSPL3
Protein Name	S23A1
Immunogen	Synthesized peptide derived from human S23A1 AA range: 237-287
Specificity	This antibody detects endogenous levels of S23A1 at Human/Mouse/Rat
Formulation	Liquid in PBS containing 50% glycerol, 0.5% BSA and 0.02% sodium azide.
Source	Polyclonal, Rabbit,IgG
Purification	The antibody was affinity-purified from rabbit serum by affinity-chromatography using specific immunogen.
Dilution	WB 1: 500-2000
Concentration	1 mg/ml
Purity	≥90%
Storage Stability	-20°C/1 year
Synonyms	
Observed Band	
Cell Pathway	Cell membrane ; Multi-pass membrane protein .
Tissue Specificity	Highly expressed in adult small intestine, kidney, thymus, ovary, colon, prostate and liver, and in fetal kidney, liver and thymus.
Function	alternative products:Experimental confirmation may be lacking for some isoforms,function:Sodium/ascorbate cotransporter. Mediates electrogenic uptake of vitamin C, with a stoichiometry of 2 Na(+) for each ascorbate.,miscellaneous:Treatment with the protein kinase C stimulator PMA results in a 10-fold decrease in ascorbate accumulation in transfected cells.,PTM:Phosphorylated.,similarity:Belongs to the xanthine/uracil permease family. SLC23A subfamily.,tissue specificity:Highly expressed in adult small intestine, kidney, thymus, ovary, colon, prostate and liver, and in fetal kidney, liver and thymus.,
Background	The absorption of vitamin C into the body and its distribution to organs requires two sodium-dependent vitamin C transporters. This gene encodes one of the two

Nanjing BYabscience technology Co.,Ltd



transporters. The encoded protein is active in bulk vitamin C transport involving epithelial surfaces. Previously, this gene had an official symbol of SLC23A2. Alternatively spliced transcript variants encoding different isoforms have been found for this gene. [provided by RefSeq, Dec 2008],

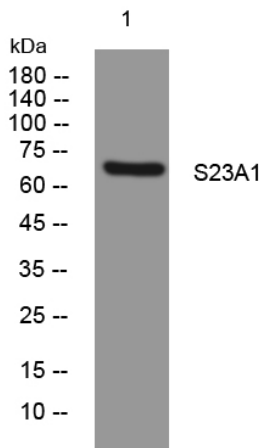
matters needing attention

Avoid repeated freezing and thawing!

Usage suggestions

This product can be used in immunological reaction related experiments. For more information, please consult technical personnel.

Products Images



Western blot analysis of lysates from MCF-7 cells, primary antibody was diluted at 1:1000, 4° over night