



FMNL3 rabbit pAb

Catalog No	BYab-10939
Isotype	IgG
Reactivity	Human; Mouse
Applications	WB
Gene Name	FMNL3 FHOD3 KIAA2014 WBP3
Protein Name	FMNL3
Immunogen	Synthesized peptide derived from human FMNL3 AA range: 96-146
Specificity	This antibody detects endogenous levels of FMNL3 at Human/Mouse
Formulation	Liquid in PBS containing 50% glycerol, 0.5% BSA and 0.02% sodium azide.
Source	Polyclonal, Rabbit,IgG
Purification	The antibody was affinity-purified from rabbit serum by affinity-chromatography using specific immunogen.
Dilution	WB 1: 500-2000
Concentration	1 mg/ml
Purity	≥90%
Storage Stability	-20°C/1 year
Synonyms	
Observed Band	
Cell Pathway	Cytoplasm . Cell membrane ; Lipid-anchor . Enriched in lamellipodia.
Tissue Specificity	Expressed in endothelial cells.
Function	similarity:Belongs to the formin homology family.,similarity:Contains 1 FH2 (formin homology 2) domain.,similarity:Contains 1 GBD/FH3 (Rho GTPase-binding/formin homology 3) domain.,
Background	The protein encoded by this gene contains a formin homology 2 domain and has high sequence identity to the mouse Wbp3 protein. Two alternative transcripts encoding different isoforms have been described. [provided by RefSeq, Jul 2008],
matters needing attention	Avoid repeated freezing and thawing!

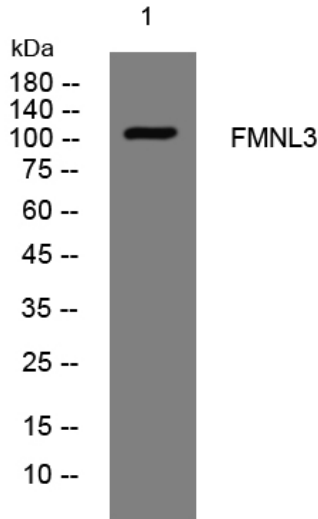
Nanjing BYabscience technology Co.,Ltd



Usage suggestions

This product can be used in immunological reaction related experiments. For more information, please consult technical personnel.

Products Images



Western blot analysis of lysates from K562 cells, primary antibody was diluted at 1:1000, 4° over night