



FKBP1B Polyclonal Antibody

Catalog No	BYab-10927
Isotype	IgG
Reactivity	Human;Rat;Mouse;
Applications	IHC; ELISA
Gene Name	FKBP1B FKBP12.6 FKBP1L FKBP9 OTK4
Protein Name	FKBP1B
Immunogen	Synthesized peptide derived from human FKBP1B AA range: 35-85
Specificity	This antibody detects endogenous levels of human FKBP1B
Formulation	Liquid in PBS containing 50% glycerol, 0.5% BSA and 0.02% sodium azide.
Source	Polyclonal, Rabbit,IgG
Purification	The antibody was affinity-purified from mouse ascites by affinity-chromatography using specific immunogen.
Dilution	IHC-p 1:50-200, ELISA(peptide)1:5000-20000
Concentration	1 mg/ml
Purity	≥90%
Storage Stability	-20°C/1 year
Synonyms	Peptidyl-prolyl cis-trans isomerase FKBP1B (PPIase FKBP1B;EC 5.2.1.8;12.6 kDa FK506-binding protein;12.6 kDa FKBP;FKBP-12.6;FK506-binding protein 1B;FKBP-1B;Immunophilin FKBP12.6;Rotamase;h-FKBP-12)
Observed Band	
Cell Pathway	Cytoplasm . Sarcoplasmic reticulum .
Tissue Specificity	Detected in heart muscle (at protein level). Isoform 1 and isoform 2 are ubiquitous with highest levels in brain and thymus.
Function	catalytic activity:Peptidylproline (omega=180) = peptidylproline (omega=0).,enzyme regulation:Inhibited by both FK506 and rapamycin.,function:Associates with the ryanodine receptor (RYR-2) in cardiac muscle sarcoplasmic reticulum and may play a unique physiological role in excitation-contraction coupling in cardiac muscle. There are four molecules of FKBP12.6 per heart muscle RYR. Has the potential to contribute to the immunosuppressive and toxic effects of FK506 and rapamycin. PPIases accelerate the folding of proteins. It catalyzes the cis-trans isomerization of proline imidic peptide bonds in oligopeptides.,similarity:Belongs to the FKBP-type PPIase

Nanjing BYabscience technology Co.,Ltd



family. FKBP1 subfamily.,similarity:Contains 1 PPIase FKBP-type domain.,tissue specificity:Ubiquitous for both isoforms with highest levels in brain and thymus.,

Background

The protein encoded by this gene is a member of the immunophilin protein family, which play a role in immunoregulation and basic cellular processes involving protein folding and trafficking. This encoded protein is a cis-trans prolyl isomerase that binds the immunosuppressants FK506 and rapamycin. It is highly similar to the FK506-binding protein 1A. Its physiological role is thought to be in excitation-contraction coupling in cardiac muscle. There are two alternatively spliced transcript variants of this gene encoding different isoforms. [provided by RefSeq, Jul 2008],

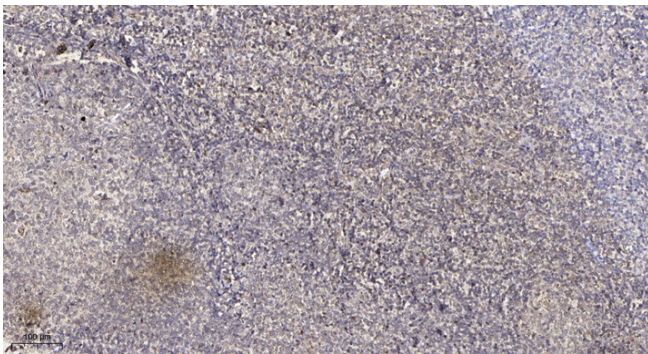
matters needing attention

Avoid repeated freezing and thawing!

Usage suggestions

This product can be used in immunological reaction related experiments. For more information, please consult technical personnel.

Products Images



Immunohistochemical analysis of paraffin-embedded human tonsil. 1, Antibody was diluted at 1:200(4° overnight). 2, Tris-EDTA,pH9.0 was used for antigen retrieval. 3,Secondary antibody was diluted at 1:200(room temperature, 30min).