



# S100A7A Polyclonal Antibody

<b>Catalog No</b>	BYab-10924
<b>Isotype</b>	IgG
<b>Reactivity</b>	Human;Rat;Mouse;
<b>Applications</b>	IHC; ELISA
<b>Gene Name</b>	S100A7A S100A15 S100A7L1
<b>Protein Name</b>	S100A7A
<b>Immunogen</b>	Synthesized peptide derived from human S100A7A AA range: 32-82
<b>Specificity</b>	This antibody detects endogenous levels of human S100A7A
<b>Formulation</b>	Liquid in PBS containing 50% glycerol, 0.5% BSA and 0.02% sodium azide.
<b>Source</b>	Polyclonal, Rabbit,IgG
<b>Purification</b>	The antibody was affinity-purified from mouse ascites by affinity-chromatography using specific immunogen.
<b>Dilution</b>	IHC-p 1:50-200, ELISA(peptide)1:5000-20000
<b>Concentration</b>	1 mg/ml
<b>Purity</b>	≥90%
<b>Storage Stability</b>	-20°C/1 year
<b>Synonyms</b>	Protein S100-A7A (S100 calcium-binding protein A15;S100 calcium-binding protein A7-like 1;S100 calcium-binding protein A7A)
<b>Observed Band</b>	
<b>Cell Pathway</b>	Cytoplasm .
<b>Tissue Specificity</b>	Overexpressed in psoriasis.
<b>Function</b>	function:May be involved in epidermal differentiation and inflammation and might therefore be important for the pathogenesis of psoriasis and other diseases.,similarity:Belongs to the S-100 family.,similarity:Contains 2 EF-hand domains.,tissue specificity:Overexpressed in psoriasis.,
<b>Background</b>	function:May be involved in epidermal differentiation and inflammation and might therefore be important for the pathogenesis of psoriasis and other diseases.,similarity:Belongs to the S-100 family.,similarity:Contains 2 EF-hand domains.,tissue specificity:Overexpressed in psoriasis.,

Nanjing BYabscience technology Co.,Ltd



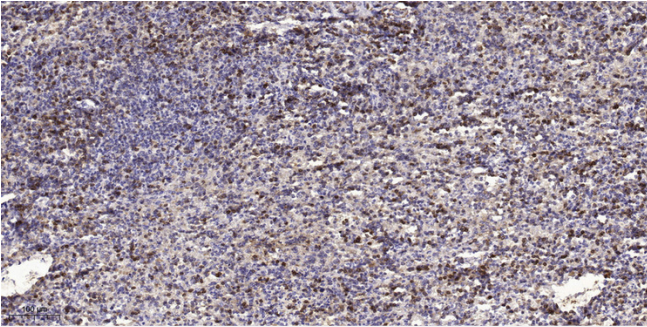
**matters needing attention**

Avoid repeated freezing and thawing!

**Usage suggestions**

This product can be used in immunological reaction related experiments. For more information, please consult technical personnel.

## Products Images



Immunohistochemical analysis of paraffin-embedded human spleen tissue. 1, primary Antibody was diluted at 1:200(4° overnight). 2, Sodium citrate pH 6.0 was used for antigen retrieval(>98°C,20min). 3, Secondary antibody was diluted at 1:200(room temperature