



# Resistin Polyclona Antibody

<b>Catalog No</b>	BYab-10922
<b>Isotype</b>	IgG
<b>Reactivity</b>	Human;Rat;Mouse;
<b>Applications</b>	IHC; ELISA
<b>Gene Name</b>	RETN FIZZ3 HXCP1 RSTN UNQ407/PRO1199
<b>Protein Name</b>	Resistin
<b>Immunogen</b>	Synthesized peptide derived from human Resistin AA range: 1-50
<b>Specificity</b>	This antibody detects endogenous levels of human Resistin
<b>Formulation</b>	Liquid in PBS containing 50% glycerol, 0.5% BSA and 0.02% sodium azide.
<b>Source</b>	Polyclonal, Rabbit,IgG
<b>Purification</b>	The antibody was affinity-purified from mouse ascites by affinity-chromatography using specific immunogen.
<b>Dilution</b>	IHC-p 1:50-200, ELISA(peptide)1:5000-20000
<b>Concentration</b>	1 mg/ml
<b>Purity</b>	≥90%
<b>Storage Stability</b>	-20°C/1 year
<b>Synonyms</b>	Resistin (Adipose tissue-specific secretory factor;ADSF;C/EBP-epsilon-regulated myeloid-specific secreted cysteine-rich protein;Cysteine-rich secreted protein A12-alpha-like 2;Cysteine-rich secreted protein FIZZ3)
<b>Observed Band</b>	
<b>Cell Pathway</b>	Secreted .
<b>Tissue Specificity</b>	Expressed in white adipose tissue (at protein level) (PubMed:11201732). Widely expressed, with particularly strong expression in lung, bone marrow, breast and peripheral blood (PubMed:15248836). Expressed strongly in bone marrow and at lower levels in lung, but not detected in other tissues (PubMed:15064728). Isoform 2 is detected in adipose tissue, bone marrow, brain, lung, peripheral blood, placenta and thymus (PubMed:15248836).
<b>Function</b>	function:Hormone that seems to suppress insulin ability to stimulate glucose uptake into adipose cells. Potentially links obesity to diabetes.,similarity:Belongs to the resistin/FIZZ family.,subunit:Homodimer; disulfide-linked.,tissue specificity:Expressed only in fatty tissues.,

Nanjing BYabscience technology Co.,Ltd



**Background**

This gene belongs to the family defined by the mouse resistin-like genes. The characteristic feature of this family is the C-terminal stretch of 10 cys residues with identical spacing. The mouse homolog of this protein is secreted by adipocytes, and may be the hormone potentially linking obesity to type II diabetes. Alternatively spliced transcript variants encoding the same protein have been found for this gene. [provided by RefSeq, Jul 2010],

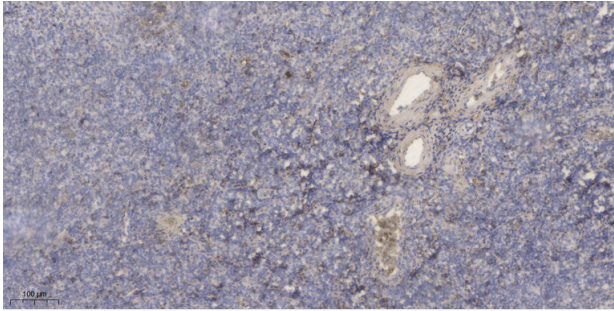
**matters needing attention**

Avoid repeated freezing and thawing!

**Usage suggestions**

This product can be used in immunological reaction related experiments. For more information, please consult technical personnel.

**Products Images**



Immunohistochemical analysis of paraffin-embedded human tonsil. 1, Antibody was diluted at 1:200(4° overnight). 2, Tris-EDTA,pH9.0 was used for antigen retrieval. 3,Secondary antibody was diluted at 1:200(room temperature, 30min).