



Beta-defensin 1 Polyclona Antibody

Catalog No	BYab-10920
Isotype	IgG
Reactivity	Human;Rat;Mouse;
Applications	IHC; ELISA
Gene Name	DEFB1 BD1 HBD1
Protein Name	Beta-defensin 1
Immunogen	Synthesized peptide derived from human Beta-defensin 1 AA range: 1-50
Specificity	This antibody detects endogenous levels of human Beta-defensin 1
Formulation	Liquid in PBS containing 50% glycerol, 0.5% BSA and 0.02% sodium azide.
Source	Polyclonal, Rabbit,IgG
Purification	The antibody was affinity-purified from mouse ascites by affinity-chromatography using specific immunogen.
Dilution	IHC-p 1:50-200, ELISA(peptide)1:5000-20000
Concentration	1 mg/ml
Purity	≥90%
Storage Stability	-20°C/1 year
Synonyms	Beta-defensin 1 (BD-1;hBD-1;Defensin, beta 1)
Observed Band	
Cell Pathway	Secreted . Membrane . Associates with tumor cell membrane-derived microvesicles (PubMed:23938203). .
Tissue Specificity	Blood plasma. Sperm. Highly expressed in the lower head and midpiece of sperm. Significantly reduced levels found in the sperms of asthenozoospermia and leukocytospermia patients (at protein level).
Function	function:Has bactericidal activity.,mass spectrometry: PubMed:7628632,similarity:Belongs to the beta-defensin family.,tissue specificity:Plasma.,
Background	Defensins form a family of microbicidal and cytotoxic peptides made by neutrophils. Members of the defensin family are highly similar in protein sequence. This gene encodes defensin, beta 1, an antimicrobial peptide implicated in the resistance of epithelial surfaces to microbial colonization. This gene maps in close proximity to defensin family member, defensin, alpha 1 and has been implicated in the pathogenesis of cystic fibrosis. [provided by RefSeq, Jul 2008],

Nanjing BYabscience technology Co.,Ltd



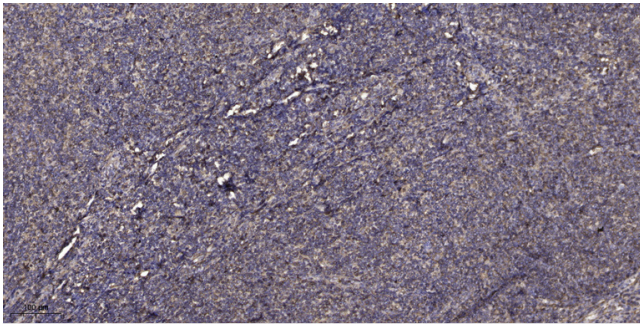
matters needing attention

Avoid repeated freezing and thawing!

Usage suggestions

This product can be used in immunological reaction related experiments. For more information, please consult technical personnel.

Products Images



Immunohistochemical analysis of paraffin-embedded human tonsil. 1, Antibody was diluted at 1:200(4° overnight). 2, Tris-EDTA,pH9.0 was used for antigen retrieval. 3,Secondary antibody was diluted at 1:200(room temperature, 30min).