



GNG4 Polyclona Antibody

Catalog No	BYab-10915
Isotype	IgG
Reactivity	Human; Mouse
Applications	IHC; ELISA
Gene Name	GNG4 GNGT4
Protein Name	GNG4
Immunogen	Synthesized peptide derived from human GNG4 AA range: 1-50
Specificity	This antibody detects endogenous levels of human GNG4
Formulation	Liquid in PBS containing 50% glycerol, 0.5% BSA and 0.02% sodium azide.
Source	Polyclonal, Rabbit,IgG
Purification	The antibody was affinity-purified from mouse ascites by affinity-chromatography using specific immunogen.
Dilution	IHC-p 1:50-200, ELISA(peptide)1:5000-20000
Concentration	1 mg/ml
Purity	≥90%
Storage Stability	-20°C/1 year
Synonyms	Guanine nucleotide-binding protein G(I)/G(S)/G(O) subunit gamma-4
Observed Band	
Cell Pathway	Cell membrane ; Lipid-anchor ; Cytoplasmic side .
Tissue Specificity	Brain, kidney, pancreas, skeletal muscle and faintly in cardiac muscle.
Function	function:Guanine nucleotide-binding proteins (G proteins) are involved as a modulator or transducer in various transmembrane signaling systems. The beta and gamma chains are required for the GTPase activity, for replacement of GDP by GTP, and for G protein-effector interaction.,similarity:Belongs to the G protein gamma family.,subunit:G proteins are composed of 3 units, alpha, beta and gamma. Interacts with beta-1 and beta-2, but not with beta-3.,tissue specificity:Brain, kidney, pancreas, skeletal muscle and faintly in cardiac muscle.,
Background	function:Guanine nucleotide-binding proteins (G proteins) are involved as a modulator or transducer in various transmembrane signaling systems. The beta and gamma chains are required for the GTPase activity, for replacement of GDP by GTP, and for G protein-effector interaction.,similarity:Belongs to the G protein

Nanjing BYabscience technology Co.,Ltd



gamma family.,subunit:G proteins are composed of 3 units, alpha, beta and gamma. Interacts with beta-1 and beta-2, but not with beta-3.,tissue specificity:Brain, kidney, pancreas, skeletal muscle and faintly in cardiac muscle.,

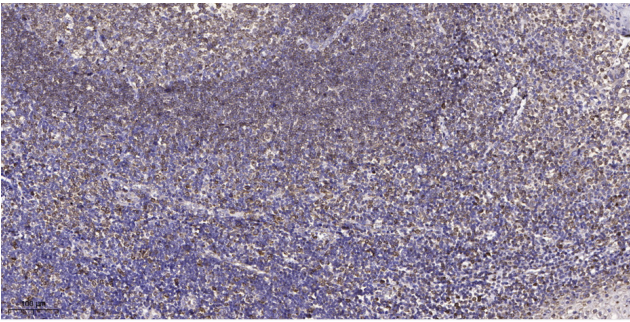
matters needing attention

Avoid repeated freezing and thawing!

Usage suggestions

This product can be used in immunological reaction related experiments. For more information, please consult technical personnel.

Products Images



Immunohistochemical analysis of paraffin-embedded human tonsil. 1, Antibody was diluted at 1:200(4° overnight). 2, Tris-EDTA,pH9.0 was used for antigen retrieval. 3,Secondary antibody was diluted at 1:200(room temperature, 45min).