



# GNG2 Polyclona Antibody

<b>Catalog No</b>	BYab-10914
<b>Isotype</b>	IgG
<b>Reactivity</b>	Human; Mouse
<b>Applications</b>	IHC; ELISA
<b>Gene Name</b>	GNG2
<b>Protein Name</b>	GNG2
<b>Immunogen</b>	Synthesized peptide derived from human GNG2 AA range: 1-50
<b>Specificity</b>	This antibody detects endogenous levels of human GNG2
<b>Formulation</b>	Liquid in PBS containing 50% glycerol, 0.5% BSA and 0.02% sodium azide.
<b>Source</b>	Polyclonal, Rabbit,IgG
<b>Purification</b>	The antibody was affinity-purified from mouse ascites by affinity-chromatography using specific immunogen.
<b>Dilution</b>	IHC-p 1:50-200, ELISA(peptide)1:5000-20000
<b>Concentration</b>	1 mg/ml
<b>Purity</b>	≥90%
<b>Storage Stability</b>	-20°C/1 year
<b>Synonyms</b>	Guanine nucleotide-binding protein G(I)/G(S)/G(O) subunit gamma-2 (G gamma-I)
<b>Observed Band</b>	
<b>Cell Pathway</b>	Cell membrane ; Lipid-anchor ; Cytoplasmic side .
<b>Tissue Specificity</b>	Expressed in fetal tissues, including testis, adrenal gland, brain, white blood cells and brain.
<b>Function</b>	function:Guanine nucleotide-binding proteins (G proteins) are involved as a modulator or transducer in various transmembrane signaling systems. The beta and gamma chains are required for the GTPase activity, for replacement of GDP by GTP, and for G protein-effector interaction.,similarity:Belongs to the G protein gamma family.,subunit:G proteins are composed of 3 units, alpha, beta and gamma.,tissue specificity:Expressed in fetal tissues, including testis, adrenal gland, brain, white blood cells and brain.,
<b>Background</b>	G protein subunit gamma 2(GNG2) Homo sapiens This gene encodes one of the gamma subunits of a guanine nucleotide-binding protein. Such proteins are involved in signaling mechanisms across membranes. Various subunits forms

**Nanjing BYabscience technology Co.,Ltd**



heterodimers which then interact with the different signal molecules. [provided by RefSeq, Aug 2011],

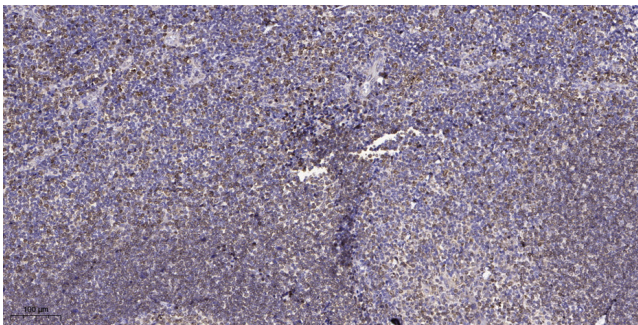
**matters needing attention**

Avoid repeated freezing and thawing!

**Usage suggestions**

This product can be used in immunological reaction related experiments. For more information, please consult technical personnel.

## Products Images



Immunohistochemical analysis of paraffin-embedded human tonsil. 1, Antibody was diluted at 1:200(4° overnight). 2, Tris-EDTA,pH9.0 was used for antigen retrieval. 3,Secondary antibody was diluted at 1:200(room temperature, 45min).