



S100G Polyclona Antibody

Catalog No	BYab-10912
Isotype	IgG
Reactivity	Human; Mouse; Rat
Applications	IHC; ELISA
Gene Name	S100G CABP9K CALB3 S100D
Protein Name	S100G
Immunogen	Synthesized peptide derived from human S100G AA range: 1-80
Specificity	This antibody detects endogenous levels of human S100G
Formulation	Liquid in PBS containing 50% glycerol, 0.5% BSA and 0.02% sodium azide.
Source	Polyclonal, Rabbit,IgG
Purification	The antibody was affinity-purified from mouse ascites by affinity-chromatography using specific immunogen.
Dilution	IHC-p 1:50-200, ELISA(peptide)1:5000-20000
Concentration	1 mg/ml
Purity	≥90%
Storage Stability	-20°C/1 year
Synonyms	Protein S100-G (Calbindin-D9k;S100 calcium-binding protein G;Vitamin D-dependent calcium-binding protein, intestinal;CABP)
Observed Band	
Cell Pathway	basolateral plasma membrane,apical plasma membrane,
Tissue Specificity	
Function	similarity:Belongs to the S-100 family.,similarity:Contains 2 EF-hand domains.,
Background	This gene encodes calbindin D9K, a vitamin D-dependent calcium-binding protein. This cytosolic protein belongs to a family of calcium-binding proteins that includes calmodulin, parvalbumin, troponin C, and S100 protein. In the intestine, the protein is vitamin D-dependent and its expression correlates with calcium transport activity. The protein may increase Ca ²⁺ absorption by buffering Ca ²⁺ in the cytoplasm and increase ATP-dependent Ca ²⁺ transport in duodenal basolateral membrane vesicles. [provided by RefSeq, Jul 2008],

Nanjing BYabscience technology Co.,Ltd



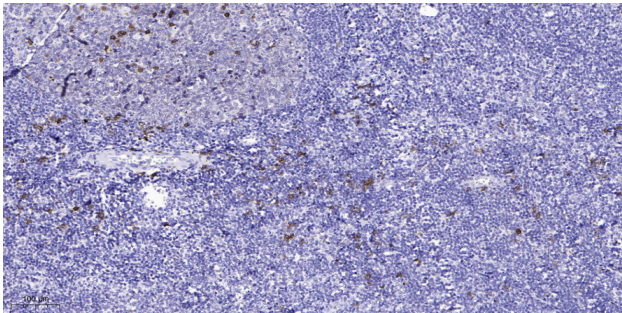
matters needing attention

Avoid repeated freezing and thawing!

Usage suggestions

This product can be used in immunological reaction related experiments. For more information, please consult technical personnel.

Products Images



Immunohistochemical analysis of paraffin-embedded human tonsil. 1, Antibody was diluted at 1:200(4° overnight). 2, Tris-EDTA,pH9.0 was used for antigen retrieval. 3,Secondary antibody was diluted at 1:200(room temperature, 45min).