



# ELOF1 Polyclona Antibody

<b>Catalog No</b>	BYab-10908
<b>Isotype</b>	IgG
<b>Reactivity</b>	Human; Mouse; Rat
<b>Applications</b>	IHC; ELISA
<b>Gene Name</b>	ELOF1
<b>Protein Name</b>	ELOF1
<b>Immunogen</b>	Synthesized peptide derived from human ELOF1 AA range: 30-110
<b>Specificity</b>	This antibody detects endogenous levels of human ELOF1
<b>Formulation</b>	Liquid in PBS containing 50% glycerol, 0.5% BSA and 0.02% sodium azide.
<b>Source</b>	Polyclonal, Rabbit,IgG
<b>Purification</b>	The antibody was affinity-purified from mouse ascites by affinity-chromatography using specific immunogen.
<b>Dilution</b>	IHC-p 1:50-200, ELISA(peptide)1:5000-20000
<b>Concentration</b>	1 mg/ml
<b>Purity</b>	≥90%
<b>Storage Stability</b>	-20°C/1 year
<b>Synonyms</b>	Transcription elongation factor 1 homolog
<b>Observed Band</b>	
<b>Cell Pathway</b>	Nucleus .
<b>Tissue Specificity</b>	Muscle,
<b>Function</b>	function:Transcription elongation factor implicated in the maintenance of proper chromatin structure in actively transcribed regions.,similarity:Belongs to the ELOF1 family.,
<b>Background</b>	function:Transcription elongation factor implicated in the maintenance of proper chromatin structure in actively transcribed regions.,similarity:Belongs to the ELOF1 family.,
<b>matters needing attention</b>	Avoid repeated freezing and thawing!

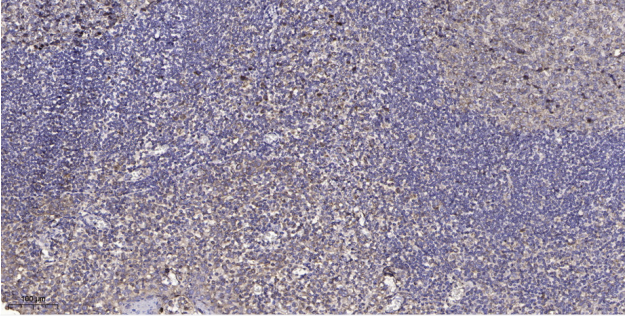
Nanjing BYabscience technology Co.,Ltd



### Usage suggestions

This product can be used in immunological reaction related experiments. For more information, please consult technical personnel.

## Products Images



Immunohistochemical analysis of paraffin-embedded human tonsil. 1, Antibody was diluted at 1:200(4° overnight). 2, Tris-EDTA,pH9.0 was used for antigen retrieval. 3,Secondary antibody was diluted at 1:200(room temperature, 45min).