



GNG13 Polyclona Antibody

Catalog No	BYab-10895
Isotype	IgG
Reactivity	Human; Mouse
Applications	IHC; ELISA
Gene Name	GNG13
Protein Name	GNG13
Immunogen	Synthesized peptide derived from human GNG13 AA range: 1-50
Specificity	This antibody detects endogenous levels of human GNG13
Formulation	Liquid in PBS containing 50% glycerol, 0.5% BSA and 0.02% sodium azide.
Source	Polyclonal, Rabbit,IgG
Purification	The antibody was affinity-purified from mouse ascites by affinity-chromatography using specific immunogen.
Dilution	IHC-p 1:50-200, ELISA(peptide)1:5000-20000
Concentration	1 mg/ml
Purity	≥90%
Storage Stability	-20°C/1 year
Synonyms	Guanine nucleotide-binding protein G(I)/G(S)/G(O) subunit gamma-13
Observed Band	
Cell Pathway	Cell membrane ; Lipid-anchor ; Cytoplasmic side .
Tissue Specificity	Brain,Cerebellum,
Function	function:Guanine nucleotide-binding proteins (G proteins) are involved as a modulator or transducer in various transmembrane signaling systems. The beta and gamma chains are required for the GTPase activity, for replacement of GDP by GTP, and for G protein-effector interaction.,similarity:Belongs to the G protein gamma family.,subunit:G proteins are composed of 3 units, alpha, beta and gamma.,
Background	Heterotrimeric G proteins, which consist of alpha (see MIM 139320), beta (see MIM 139380), and gamma subunits, function as signal transducers for the 7-transmembrane-helix G protein-coupled receptors. GNG13 is a gamma subunit that is expressed in taste, retinal, and neuronal tissues and plays a key role in taste transduction (Li et al., 2006 [PubMed 16473877]).[supplied by OMIM, Oct

Nanjing BYabscience technology Co.,Ltd



2009],

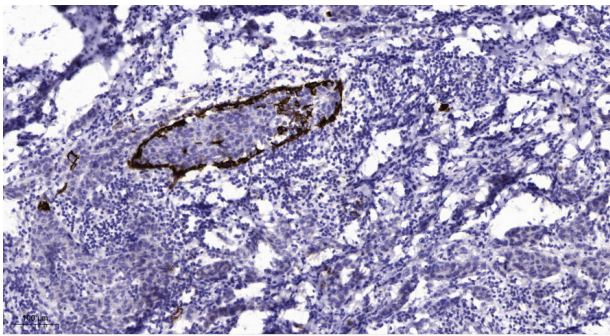
matters needing attention

Avoid repeated freezing and thawing!

Usage suggestions

This product can be used in immunological reaction related experiments. For more information, please consult technical personnel.

Products Images



Immunohistochemical analysis of paraffin-embedded human Breast cancer. 1, Antibody was diluted at 1:200(4° overnight). 2, Tris-EDTA,pH9.0 was used for antigen retrieval. 3,Secondary antibody was diluted at 1:200(room temperature, 45min).