



ITK Polyclonal Antibody

Catalog No	BYab-10871
Isotype	IgG
Reactivity	Human; Mouse
Applications	IHC;IF;WB
Gene Name	ITK EMT LYK
Protein Name	ITK
Immunogen	Synthesized peptide derived from human ITK AA range: 450-530
Specificity	This antibody detects endogenous levels of human ITK
Formulation	Liquid in PBS containing 50% glycerol, 0.5% BSA and 0.02% sodium azide.
Source	Polyclonal, Rabbit,IgG
Purification	The antibody was affinity-purified from rabbit serum by affinity-chromatography using specific immunogen.
Dilution	IHC-p 1:50-200, WB 1:500-2000. IF 1:50-200
Concentration	1 mg/ml
Purity	≥90%
Storage Stability	-20°C/1 year
Synonyms	Tyrosine-protein kinase ITK/TSK (EC 2.7.10.2;Interleukin-2-inducible T-cell kinase;IL-2-inducible T-cell kinase;Kinase EMT;T-cell-specific kinase;Tyrosine-protein kinase Lyk)
Observed Band	72kD
Cell Pathway	Cytoplasm . Nucleus . Localizes in the vicinity of cell surface receptors in the plasma membrane after receptor stimulation.
Tissue Specificity	T-cell lines and natural killer cell lines.
Function	catalytic activity:ATP + a [protein]-L-tyrosine = ADP + a [protein]-L-tyrosine phosphate.,cofactor:Binds 1 zinc ion per subunit.,function:Plays a role in T-cell proliferation and differentiation.,induction:By interleukin-2.,similarity:Belongs to the protein kinase superfamily. Tyr protein kinase family. TEC subfamily.,similarity:Contains 1 Btk-type zinc finger.,similarity:Contains 1 PH domain.,similarity:Contains 1 protein kinase domain.,similarity:Contains 1 SH2 domain.,similarity:Contains 1 SH3 domain.,subcellular location:Localizes to cell surface receptors in the plasma membrane after stimulation with respective receptors (TCR, CD28, CD2) in T-cells.,tissue specificity:T-cell lines and natural

Nanjing BYabscience technology Co.,Ltd



killer cell lines.,

Background

This gene encodes an intracellular tyrosine kinase expressed in T-cells. The protein contains both SH2 and SH3 domains which are often found in intracellular kinases. It is thought to play a role in T-cell proliferation and differentiation. [provided by RefSeq, Jul 2008],

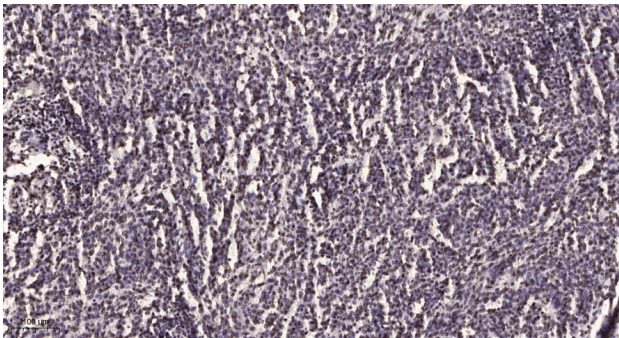
matters needing attention

Avoid repeated freezing and thawing!

Usage suggestions

This product can be used in immunological reaction related experiments. For more information, please consult technical personnel.

Products Images



Immunohistochemical analysis of paraffin-embedded human brain tumor. 1, Antibody was diluted at 1:200(4° overnight). 2, Tris-EDTA,pH9.0 was used for antigen retrieval. 3,Secondary antibody was diluted at 1:200(room temperature, 45min).