



# CCD19 Polyclonal Antibody

<b>Catalog No</b>	BYab-10833
<b>Isotype</b>	IgG
<b>Reactivity</b>	Human;Rat;Mouse;
<b>Applications</b>	IHC;IF;WB
<b>Gene Name</b>	CCDC19 NESG1
<b>Protein Name</b>	CCD19
<b>Immunogen</b>	Synthesized peptide derived from human CCD19
<b>Specificity</b>	This antibody detects endogenous levels of human CCD19
<b>Formulation</b>	Liquid in PBS containing 50% glycerol, 0.5% BSA and 0.02% sodium azide.
<b>Source</b>	Polyclonal, Rabbit,IgG
<b>Purification</b>	The antibody was affinity-purified from rabbit serum by affinity-chromatography using specific immunogen.
<b>Dilution</b>	IHC-p 1:50-200, WB 1:500-2000. IF 1:50-200
<b>Concentration</b>	1 mg/ml
<b>Purity</b>	≥90%
<b>Storage Stability</b>	-20°C/1 year
<b>Synonyms</b>	Coiled-coil domain-containing protein 19, mitochondrial (Nasopharyngeal epithelium-specific protein 1)
<b>Observed Band</b>	60kD
<b>Cell Pathway</b>	Cytoplasm, cytoskeleton, cilium axoneme . Cytoplasm, cytoskeleton, flagellum axoneme . Located in the proximal region of respiratory cilia. .
<b>Tissue Specificity</b>	Expressed in respiratory cells and in sperm (at protein level) (PubMed:33139725). Expressed in nasopharyngeal epithelium and trachea (PubMed:10524255).
<b>Function</b>	tissue specificity:Expressed in nasopharyngeal epithelium and trachea but not in esophagus, stomach, large intestine, liver, cerebrum, heart, bladder, kidney, thymus, or lung.,
<b>Background</b>	tissue specificity:Expressed in nasopharyngeal epithelium and trachea but not in esophagus, stomach, large intestine, liver, cerebrum, heart, bladder, kidney, thymus, or lung.,
<b>matters needing attention</b>	Avoid repeated freezing and thawing!

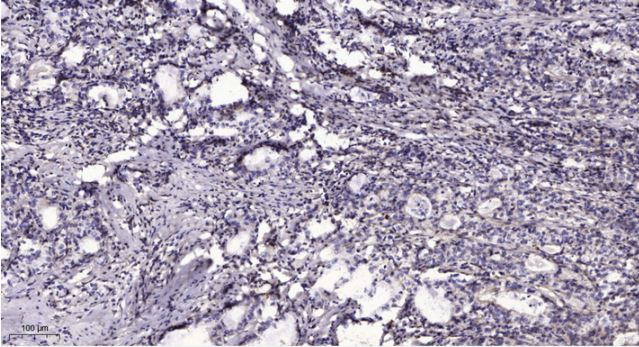
Nanjing BYabscience technology Co.,Ltd



### Usage suggestions

This product can be used in immunological reaction related experiments. For more information, please consult technical personnel.

## Products Images



Immunohistochemical analysis of paraffin-embedded human Gastric adenocarcinoma. 1, Antibody was diluted at 1:200(4° overnight). 2, Tris-EDTA,pH9.0 was used for antigen retrieval. 3,Secondary antibody was diluted at 1:200(room temperature, 45min).