



# TIF-IA Polyclonal Antibody

<b>Catalog No</b>	BYab-10800
<b>Isotype</b>	IgG
<b>Reactivity</b>	Human;Mouse;Rat
<b>Applications</b>	WB;IHC
<b>Gene Name</b>	RRN3 TIFIA
<b>Protein Name</b>	RNA polymerase I-specific transcription initiation factor RRN3 (Transcription initiation factor IA) (TIF-IA)
<b>Immunogen</b>	Synthesized peptide derived from human TIF-IA Polyclonal
<b>Specificity</b>	This antibody detects endogenous levels of TIF-IA.
<b>Formulation</b>	Liquid in PBS containing 50% glycerol, 0.5% BSA and 0.02% sodium azide.
<b>Source</b>	Polyclonal, Rabbit,IgG
<b>Purification</b>	The antibody was affinity-purified from rabbit antiserum by affinity-chromatography using epitope-specific immunogen.
<b>Dilution</b>	WB 1:500-2000;IHC-p 1:50-300
<b>Concentration</b>	1 mg/ml
<b>Purity</b>	≥90%
<b>Storage Stability</b>	-20°C/1 year
<b>Synonyms</b>	RNA polymerase I-specific transcription initiation factor RRN3 (Transcription initiation factor IA) (TIF-IA)
<b>Observed Band</b>	70kD
<b>Cell Pathway</b>	Nucleus, nucleolus .
<b>Tissue Specificity</b>	Hippocampus,Kidney,Pooled,Spleen,
<b>Function</b>	function:Required for efficient transcription initiation by RNA polymerase I.,similarity:Belongs to the RRN3 family.,
<b>Background</b>	function:Required for efficient transcription initiation by RNA polymerase I.,similarity:Belongs to the RRN3 family.,
<b>matters needing attention</b>	Avoid repeated freezing and thawing!

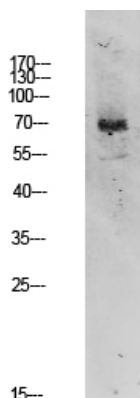
Nanjing BYabscience technology Co.,Ltd



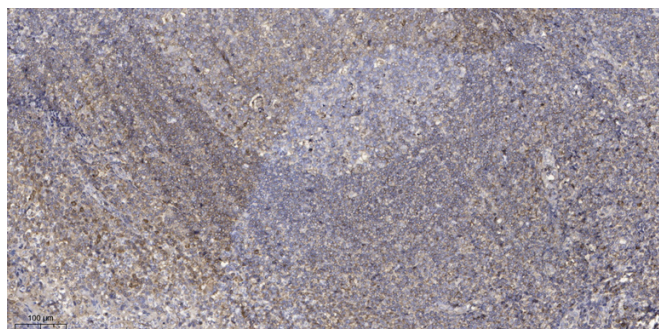
### Usage suggestions

This product can be used in immunological reaction related experiments. For more information, please consult technical personnel.

## Products Images



Western blot analysis of 3T3 lysate, antibody was diluted at 1000. Secondary antibody(catalog#:RS0002) was diluted at 1:20000



Immunohistochemical analysis of paraffin-embedded human tonsil. 1, Antibody was diluted at 1:200(4° overnight). 2, Tris-EDTA,pH9.0 was used for antigen retrieval. 3,Secondary antibody was diluted at 1:200(room temperature, 45min).