



C8 α Polyclonal Antibody

Catalog No	BYab-10777
Isotype	IgG
Reactivity	Human;Rat;Mouse;
Applications	WB;ELISA
Gene Name	C8A
Protein Name	C8 α
Immunogen	Synthesized peptide derived from human C8 α . at AA range: 201-250
Specificity	C8 α Polyclonal Antibody detects endogenous levels of C8 α
Formulation	Liquid in PBS containing 50% glycerol, 0.5% BSA and 0.02% sodium azide.
Source	Polyclonal, Rabbit,IgG
Purification	The antibody was affinity-purified from rabbit antiserum by affinity-chromatography using epitope-specific immunogen.
Dilution	WB 1:500-2000, ELISA 1:10000-20000
Concentration	1 mg/ml
Purity	$\geq 90\%$
Storage Stability	-20°C/1 year
Synonyms	Complement component C8 alpha chain (Complement component 8 subunit alpha)
Observed Band	60kD
Cell Pathway	Secreted. Cell membrane; Multi-pass membrane protein. Secreted as soluble protein. Inserts into the cell membrane of target cells.
Tissue Specificity	Blood,Liver,Plasma,
Function	disease:Defects in C8A are a cause of complement C8 deficiency type I [MIM:120950]. Patients with deficiency of C8 suffer from recurrent bacterial infections, predominantly from Neisseria meningitidis.,function:C8 is a constituent of the membrane attack complex. C8 binds to the C5b-7 complex, forming the C5b-8 complex. C5-b8 binds C9 and acts as a catalyst in the polymerization of C9.,similarity:Belongs to the complement C6/C7/C8/C9 family.,similarity:Contains 1 EGF-like domain.,similarity:Contains 1 LDL-receptor class A domain.,similarity:Contains 1 MACPF domain.,similarity:Contains 2 TSP type-1 domains.,subunit:C8 is composed of three chains: alpha, beta and gamma. The alpha and gamma chains are disulfide bonded.,

Nanjing BYabscience technology Co.,Ltd



Background

C8 is a component of the complement system and contains three polypeptides, alpha, beta and gamma. This gene encodes the alpha subunit of C8. C8 participates in the formation of the membrane attack complex (MAC). The MAC assembles on bacterial membranes to form a pore, permitting disruption of bacterial membrane organization. Mutations in this gene cause complement C8 alpha-gamma deficiency. [provided by RefSeq, Nov 2008],

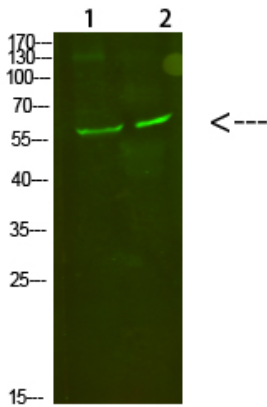
matters needing attention

Avoid repeated freezing and thawing!

Usage suggestions

This product can be used in immunological reaction related experiments. For more information, please consult technical personnel.

Products Images



Western Blot analysis of 1,mouse-kidney
2,mouse-heart cells using primary antibody diluted at 1:500(4°C overnight). Secondary antibody:Goat Anti-rabbit IgG IRDye 800(diluted at 1:5000, 25°C, 1 hour)