



GCM2 Polyclonal Antibody

Catalog No	BYab-10774
Isotype	IgG
Reactivity	Human;Mouse;Rat
Applications	WB;ELISA
Gene Name	GCM2
Protein Name	GCM2
Immunogen	Synthesized peptide derived from human GCM2. at AA range: 21-70
Specificity	GCM2 Polyclonal Antibody detects endogenous levels of GCM2
Formulation	Liquid in PBS containing 50% glycerol, 0.5% BSA and 0.02% sodium azide.
Source	Polyclonal, Rabbit,IgG
Purification	The antibody was affinity-purified from rabbit antiserum by affinity-chromatography using epitope-specific immunogen.
Dilution	WB 1:500-2000, ELISA 1:10000-20000
Concentration	1 mg/ml
Purity	≥90%
Storage Stability	-20°C/1 year
Synonyms	Chorion-specific transcription factor GCMb (hGCMb) (GCM motif protein 2) (Glial cells missing homolog 2)
Observed Band	56kD
Cell Pathway	Nucleus .
Tissue Specificity	Brain,Fetal brain,
Function	function:Probable transcriptional regulator.,similarity:Contains 1 GCM DNA-binding domain.,
Background	This gene is a homolog of the Drosophila glial cells missing gene, which is thought to act as a binary switch between neuronal and glial cell determination. The protein encoded by this gene contains a conserved N-terminal GCM motif that has DNA-binding activity. The protein is a transcription factor that acts as a master regulator of parathyroid development. It has been suggested that this transcription factor might mediate the effect of calcium on parathyroid hormone expression and secretion in parathyroid cells. Mutations in this gene are associated with hypoparathyroidism. [provided by RefSeq, Jul 2008],

Nanjing BYabscience technology Co.,Ltd



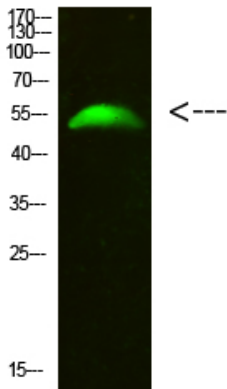
matters needing attention

Avoid repeated freezing and thawing!

Usage suggestions

This product can be used in immunological reaction related experiments. For more information, please consult technical personnel.

Products Images



Western Blot analysis of 293T cells using primary antibody diluted at 1:500(4°C overnight). Secondary antibody:Goat Anti-rabbit IgG IRDye 800(diluted at 1:5000, 25°C, 1 hour)