



# LIM and SH3 domain protein 1 Polyclonal Antibody

<b>Catalog No</b>	BYab-10766
<b>Isotype</b>	IgG
<b>Reactivity</b>	Human;Mouse;Rat
<b>Applications</b>	WB;IHC
<b>Gene Name</b>	LASP1 MLN50
<b>Protein Name</b>	LIM and SH3 domain protein 1
<b>Immunogen</b>	Synthesized peptide derived from human LIM and SH3 domain protein 1. at AA range: 90-130
<b>Specificity</b>	This antibody detects endogenous levels of LIM and SH3 domain protein 1
<b>Formulation</b>	Liquid in PBS containing 50% glycerol, 0.5% BSA and 0.02% sodium azide.
<b>Source</b>	Polyclonal, Rabbit,IgG
<b>Purification</b>	The antibody was affinity-purified from rabbit antiserum by affinity-chromatography using epitope-specific immunogen.
<b>Dilution</b>	WB 1:500-2000;IHC-p 1:50-300
<b>Concentration</b>	1 mg/ml
<b>Purity</b>	≥90%
<b>Storage Stability</b>	-20°C/1 year
<b>Synonyms</b>	LIM and SH3 domain protein 1 (LASP-1) (Metastatic lymph node gene 50 protein) (MLN 50)
<b>Observed Band</b>	38kD
<b>Cell Pathway</b>	Cytoplasm, cell cortex . Cytoplasm, cytoskeleton . Associated with the F-actin rich cortical cytoskeleton. .
<b>Tissue Specificity</b>	Epithelium,Liver,Mammary carcinoma,Platelet,Skin,T-cell,
<b>Function</b>	function:Plays an important role in the regulation of dynamic actin-based, cytoskeletal activities. Agonist-dependent changes in LASP1 phosphorylation may also serve to regulate actin-associated ion transport activities, not only in the parietal cell but also in certain other F-actin-rich secretory epithelial cell types.,PTM:Phosphorylated.,similarity:Contains 1 LIM zinc-binding domain.,similarity:Contains 1 SH3 domain.,similarity:Contains 2 nebulin repeats.,subcellular location:Associated with the F-actin rich cortical cytoskeleton.,subunit:Interacts with F-actin.,

Nanjing BYabscience technology Co.,Ltd



### Background

This gene encodes a member of a subfamily of LIM proteins, characterized by a LIM motif and a domain of Src homology region 3, and also a member of the nebulin family of actin-binding proteins. The encoded protein is a cAMP and cGMP dependent signaling protein and binds to the actin cytoskeleton at extensions of the cell membrane. The encoded protein has been linked to metastatic breast cancer, hematopoietic tumors such as B-cell lymphomas, and colorectal cancer. [provided by RefSeq, Oct 2012],

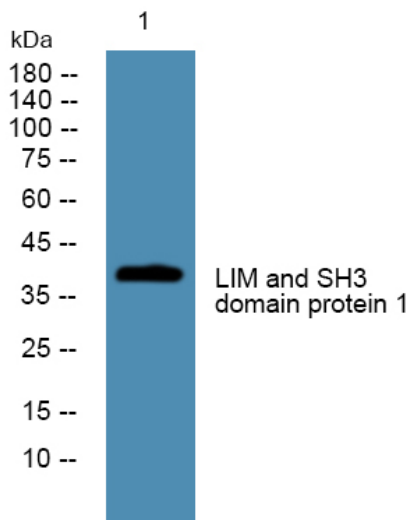
### matters needing attention

Avoid repeated freezing and thawing!

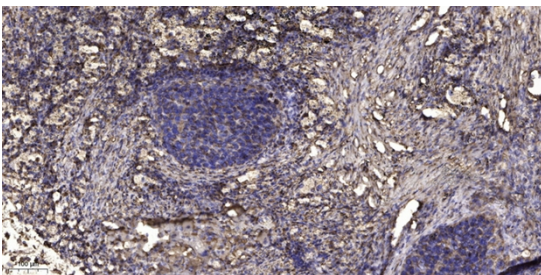
### Usage suggestions

This product can be used in immunological reaction related experiments. For more information, please consult technical personnel.

## Products Images



Western blot analysis of lysates from U2OS cells, primary antibody was diluted at 1:1000, 4° over night



Immunohistochemical analysis of paraffin-embedded human Squamous cell carcinoma of lung. 1, Antibody was diluted at 1:200(4° overnight). 2, Tris-EDTA,pH9.0 was used for antigen retrieval. 3,Secondary antibody was diluted at 1:200(room temperature, 45min).