



NUT Polyclonal Antibody

Catalog No	BYab-10758
Isotype	IgG
Reactivity	Human;Rat;Mouse;
Applications	WB;ELISA
Gene Name	NUT C15orf55
Protein Name	NUT
Immunogen	Synthesized peptide derived from human NUT. at AA range: 1082-1131
Specificity	This antibody detects endogenous levels of NUT
Formulation	Liquid in PBS containing 50% glycerol, 0.5% BSA and 0.02% sodium azide.
Source	Polyclonal, Rabbit,IgG
Purification	The antibody was affinity-purified from rabbit antiserum by affinity-chromatography using epitope-specific immunogen.
Dilution	WB 1:500-2000, ELISA 1:10000-20000
Concentration	1 mg/ml
Purity	≥90%
Storage Stability	-20°C/1 year
Synonyms	Protein NUT (Nuclear protein in testis)
Observed Band	63kD
Cell Pathway	Cytoplasm . Nucleus . Shuttles between nucleus and cytoplasm. .
Tissue Specificity	Specifically expressed in testis.
Function	disease:A chromosomal aberration involving NUT is found in a rare, aggressive, and lethal carcinoma arising in midline organs of young people. Translocation t(15;19)(q14;p13) with BRD4 which produces a BRD4-NUT fusion protein.,disease:A chromosomal aberration involving NUT is found in a rare, aggressive, and lethal carcinoma arising in midline organs of young people. Translocation t(15;9)(q14;q34) with BRD3 which produces a BRD3-NUT fusion protein.,PTM:Phosphorylation on Ser-1026, Ser-1029 or Ser-1031 is important for cytoplasmic export.,similarity:Belongs to the FAM22 family.,subcellular location:Shuttles between nucleus and cytoplasm.,tissue specificity:Specifically expressed in testis.,

Nanjing BYabscience technology Co.,Ltd



Background

disease:A chromosomal aberration involving NUT is found in a rare, aggressive, and lethal carcinoma arising in midline organs of young people. Translocation t(15;19)(q14;p13) with BRD4 which produces a BRD4-NUT fusion protein.,disease:A chromosomal aberration involving NUT is found in a rare, aggressive, and lethal carcinoma arising in midline organs of young people. Translocation t(15;9)(q14;q34) with BRD3 which produces a BRD3-NUT fusion protein.,PTM:Phosphorylation on Ser-1026, Ser-1029 or Ser-1031 is important for cytoplasmic export.,similarity:Belongs to the FAM22 family.,subcellular location:Shuttles between nucleus and cytoplasm.,tissue specificity:Specifically expressed in testis.,

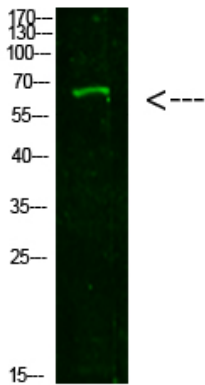
matters needing attention

Avoid repeated freezing and thawing!

Usage suggestions

This product can be used in immunological reaction related experiments. For more information, please consult technical personnel.

Products Images



Western Blot analysis of 293T cells using primary antibody diluted at 1:1000(4°C overnight). Secondary antibody:Goat Anti-rabbit IgG IRDye 800(diluted at 1:5000, 25°C, 1 hour)