



CTXL Polyclonal Antibody

| | |
|---------------------------|---|
| Catalog No | BYab-10755 |
| Isotype | IgG |
| Reactivity | Human;Rat;Mouse; |
| Applications | WB;ELISA |
| Gene Name | VSIG2 CTH CTXL UNQ2770/PRO7154 |
| Protein Name | CTXL |
| Immunogen | Synthesized peptide derived from human CTXL. at AA range: 260-290 |
| Specificity | This antibody detects endogenous levels of CTXL |
| Formulation | Liquid in PBS containing 50% glycerol, 0.5% BSA and 0.02% sodium azide. |
| Source | Polyclonal, Rabbit,IgG |
| Purification | The antibody was affinity-purified from rabbit antiserum by affinity-chromatography using epitope-specific immunogen. |
| Dilution | WB 1:500-2000, ELISA 1:10000-20000 |
| Concentration | 1 mg/ml |
| Purity | ≥90% |
| Storage Stability | -20°C/1 year |
| Synonyms | V-set and immunoglobulin domain-containing protein 2 (Cortical thymocyte-like protein) (CT-like protein) |
| Observed Band | 34kD |
| Cell Pathway | Membrane ; Single-pass type I membrane protein . |
| Tissue Specificity | Highly expressed in stomach, colon, prostate, trachea and thyroid glands and weakly in bladder and lung. |
| Function | similarity:Contains 1 Ig-like C2-type (immunoglobulin-like) domain.,similarity:Contains 1 Ig-like V-type (immunoglobulin-like) domain.,tissue specificity:Highly expressed in stomach, colon, prostate, trachea and thyroid glands and weakly in bladder and lung., |
| Background | similarity:Contains 1 Ig-like C2-type (immunoglobulin-like) domain.,similarity:Contains 1 Ig-like V-type (immunoglobulin-like) domain.,tissue specificity:Highly expressed in stomach, colon, prostate, trachea and thyroid glands and weakly in bladder and lung., |

Nanjing BYabscience technology Co.,Ltd



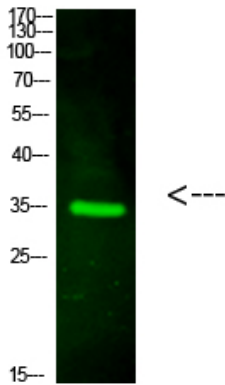
matters needing attention

Avoid repeated freezing and thawing!

Usage suggestions

This product can be used in immunological reaction related experiments. For more information, please consult technical personnel.

Products Images



Western Blot analysis of HeLa cells using primary antibody diluted at 1:1000 (4°C overnight). Secondary antibody: Goat Anti-rabbit IgG IRDye 800 (diluted at 1:5000, 25°C, 1 hour)