



# CNPY3 Polyclonal Antibody

<b>Catalog No</b>	BYab-10751
<b>Isotype</b>	IgG
<b>Reactivity</b>	Human;Mouse
<b>Applications</b>	IHC;IF;ELISA
<b>Gene Name</b>	CNPY3 CTG4A ERDA5 PRAT4A TNRC5 HSPC084 UNQ1934/PRO4409
<b>Protein Name</b>	Protein canopy homolog 3 (CTG repeat protein 4a) (Expanded repeat-domain protein CAG/CTG 5) (Protein associated with TLR4) (Trinucleotide repeat-containing gene 5 protein)
<b>Immunogen</b>	Synthetic peptide from human protein at AA range: 1-50
<b>Specificity</b>	The antibody detects endogenous CNPY3
<b>Formulation</b>	Liquid in PBS containing 50% glycerol, 0.5% BSA and 0.02% sodium azide.
<b>Source</b>	Polyclonal, Rabbit,IgG
<b>Purification</b>	The antibody was affinity-purified from rabbit antiserum by affinity-chromatography using epitope-specific immunogen.
<b>Dilution</b>	IHC-p 1:50-200, ELISA 1:10000-20000. IF 1:50-200
<b>Concentration</b>	1 mg/ml
<b>Purity</b>	≥90%
<b>Storage Stability</b>	-20°C/1 year
<b>Synonyms</b>	Protein canopy homolog 3 (CTG repeat protein 4a;Expanded repeat-domain protein CAG/CTG 5;Protein associated with TLR4;Trinucleotide repeat-containing gene 5 protein)
<b>Observed Band</b>	
<b>Cell Pathway</b>	Endoplasmic reticulum .
<b>Tissue Specificity</b>	Brain cortex,Cervix,Colon,Liver,Lung,Spleen,Umbilical cord blood,
<b>Function</b>	similarity:Belongs to the canopy family.,similarity:Contains 1 saposin B-type domain.,subunit:Interacts with TLR4.,
<b>Background</b>	canopy FGF signaling regulator 3(CNPY3) Homo sapiens This gene encodes a protein that binds members of the toll-like receptor protein family and functions as a chaperone to aid in folding and export of these proteins. Alternative splicing results in multiple transcript variants. Naturally occurring readthrough transcription occurs between this locus and the downstream GNMT (glycine N-methyltransferase) gene and is represented with GeneID:107080644. [provided

**Nanjing BYabscience technology Co.,Ltd**



by RefSeq, Jan 2016],

**matters needing attention**

Avoid repeated freezing and thawing!

**Usage suggestions**

This product can be used in immunological reaction related experiments. For more information, please consult technical personnel.

Nanjing BYabscience technology Co.,Ltd

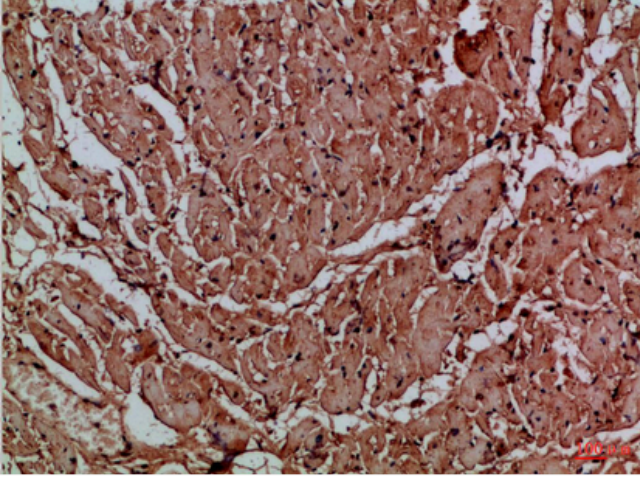
网址: [www.njbybio.com](http://www.njbybio.com)

官方热线: 025-5229-8998

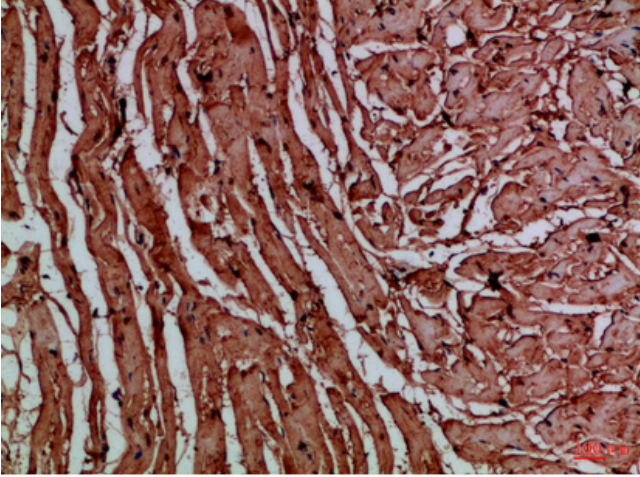
监督电话: 15950492658



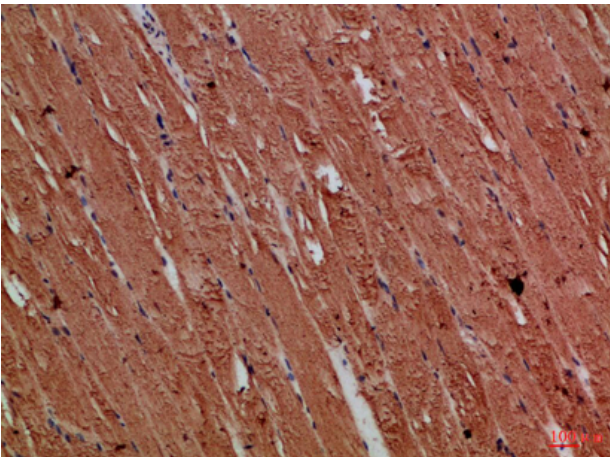
## Products Images



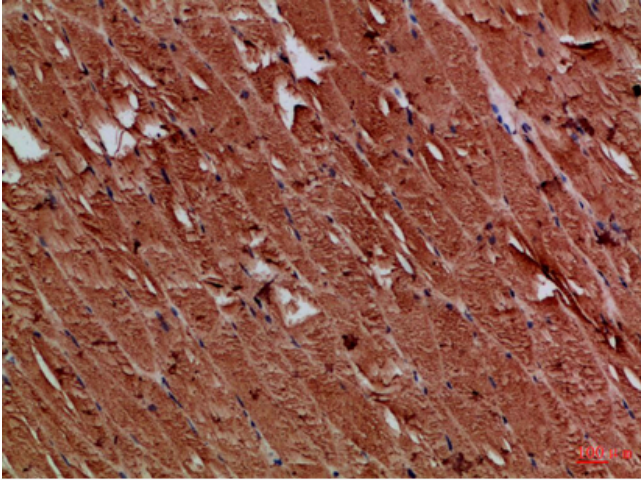
Immunohistochemical analysis of paraffin-embedded Human-heart, antibody was diluted at 1:100



Immunohistochemical analysis of paraffin-embedded Human-heart, antibody was diluted at 1:100



Immunohistochemical analysis of paraffin-embedded Human-skeletal-muscle, antibody was diluted at 1:100



Immunohistochemical analysis of paraffin-embedded Human-skeletal-muscle, antibody was diluted at 1:100