



CD300a Polyclonal Antibody

Catalog No	BYab-10740
Isotype	IgG
Reactivity	Human;Rat;Mouse;
Applications	IHC;IF;ELISA
Gene Name	CD300A CMRF35H IGSF12 HSPC083
Protein Name	CMRF35-like molecule 8 (CLM-8) (CD300 antigen-like family member A) (CMRF-35-H9) (CMRF35-H9) (CMRF35-H) (IRC1/IRC2) (Immunoglobulin superfamily member 12) (IgSF12) (Inhibitory receptor protein 60) (IR
Immunogen	Synthetic peptide from human protein at AA range: 141-190
Specificity	The antibody detects endogenous CD300a
Formulation	Liquid in PBS containing 50% glycerol, 0.5% BSA and 0.02% sodium azide.
Source	Polyclonal, Rabbit,IgG
Purification	The antibody was affinity-purified from rabbit antiserum by affinity-chromatography using epitope-specific immunogen.
Dilution	IHC-p 1:50-200, ELISA 1:10000-20000. IF 1:50-200
Concentration	1 mg/ml
Purity	≥90%
Storage Stability	-20°C/1 year
Synonyms	CMRF35-like molecule 8 (CLM-8;CD300 antigen-like family member A;CMRF-35-H9;CMRF35-H9;CMRF35-H;IRC1/IRC2;Immunoglobulin superfamily member 12;IgSF12;Inhibitory receptor protein 60;IRp60;NK inhibitory receptor;CD antigen CD300a)
Observed Band	
Cell Pathway	Cell membrane ; Single-pass type I membrane protein .
Tissue Specificity	Expressed not only by natural killer (NK) cells but also by T-cell subsets, B-cells, dendritic cells, mast cells, granulocytes and monocytes.
Function	function:Inhibitory receptor which may contribute to the down-regulation of cytolytic activity in natural killer (NK) cells, and to the down-regulation of mast cell degranulation.;PTM:Phosphorylated on tyrosine.;similarity:Belongs to the CD300 family.;similarity:Contains 1 Ig-like V-type (immunoglobulin-like) domain.;subunit:Upon tyrosine-phosphorylation, interacts with PTN6/SHP-1 and PTPN11/SHP-2 and INPP5D.;tissue specificity:Expressed not only by natural killer (NK) cells but also by T-cell subsets, B-cells, dendritic cells, mast cells,

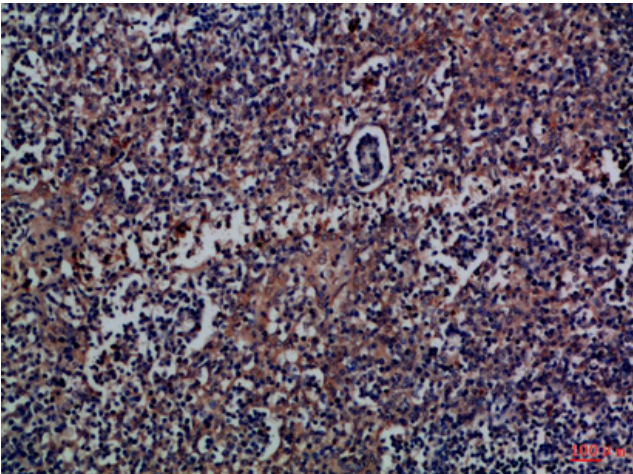
Nanjing BYabscience technology Co.,Ltd



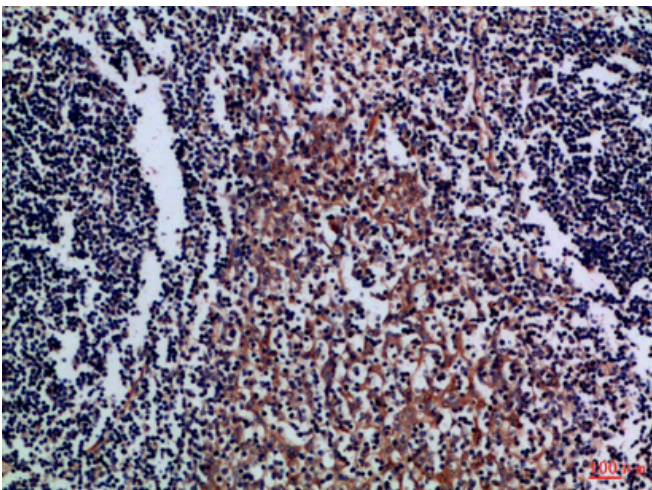
granulocytes and monocytes.,

Background	CD300a molecule(CD300A) Homo sapiens This gene encodes a member of the CD300 glycoprotein family of cell surface proteins found on leukocytes involved in immune response signaling pathways. This gene is located on chromosome 17 in a cluster with all but one of the other family members. Multiple transcript variants encoding different isoforms have been found for this gene. [provided by RefSeq, Feb 2012],
matters needing attention	Avoid repeated freezing and thawing!
Usage suggestions	This product can be used in immunological reaction related experiments. For more information, please consult technical personnel.

Products Images



Immunohistochemical analysis of paraffin-embedded Human-tonsil, antibody was diluted at 1:100



Immunohistochemical analysis of paraffin-embedded Human-tonsil, antibody was diluted at 1:100

Nanjing BYabscience technology Co.,Ltd