



# BMPR-1B Polyclonal Antibody

<b>Catalog No</b>	BYab-10739
<b>Isotype</b>	IgG
<b>Reactivity</b>	Human;Mouse
<b>Applications</b>	IHC;IF;ELISA
<b>Gene Name</b>	BMPR1B
<b>Protein Name</b>	Bone morphogenetic protein receptor type-1B (BMP type-1B receptor) (BMPR-1B) (EC 2.7.11.30) (CD antigen CDw293)
<b>Immunogen</b>	Synthetic peptide from human protein at AA range: 21-70
<b>Specificity</b>	The antibody detects endogenous BMPR-1B
<b>Formulation</b>	Liquid in PBS containing 50% glycerol, 0.5% BSA and 0.02% sodium azide.
<b>Source</b>	Polyclonal, Rabbit,IgG
<b>Purification</b>	The antibody was affinity-purified from rabbit antiserum by affinity-chromatography using epitope-specific immunogen.
<b>Dilution</b>	IHC-p 1:50-200, ELISA 1:10000-20000. IF 1:50-200
<b>Concentration</b>	1 mg/ml
<b>Purity</b>	≥90%
<b>Storage Stability</b>	-20°C/1 year
<b>Synonyms</b>	Bone morphogenetic protein receptor type-1B (BMP type-1B receptor;BMPR-1B;EC 2.7.11.30;CD antigen CDw293)
<b>Observed Band</b>	
<b>Cell Pathway</b>	Cell membrane ; Single-pass type I membrane protein .
<b>Tissue Specificity</b>	Ovary,PNS,Prostate,
<b>Function</b>	catalytic activity:ATP + [receptor-protein] = ADP + [receptor-protein] phosphate.,cofactor:Magnesium or manganese.,disease:Defects in BMPR1B are a cause of brachydactyly type A2 (BDA2) [MIM:112600]. Brachydactylies (BDs) are a group of inherited malformations characterized by shortening of the digits due to abnormal development of the phalanges and/or the metacarpals. They have been classified on an anatomic and genetic basis into five groups, A to E, including three subgroups (A1 to A3) that usually manifest as autosomal dominant traits. BDA2 was described first in a large Norwegian kindred. BDA2 is caused by mutations in BMPR1B gene and studies demonstrate that these mutations function as dominant negatives in vitro and in vivo.,disease:Defects in BMPR1B are the cause of acromesomelic chondrodysplasia with genital anomalies

Nanjing BYabscience technology Co.,Ltd



(AMDGA) [MIM:609441]. Acromesomelic chondrodysplasias are rare

**Background**

This gene encodes a member of the bone morphogenetic protein (BMP) receptor family of transmembrane serine/threonine kinases. The ligands of this receptor are BMPs, which are members of the TGF-beta superfamily. BMPs are involved in endochondral bone formation and embryogenesis. These proteins transduce their signals through the formation of heteromeric complexes of 2 different types of serine (threonine) kinase receptors: type I receptors of about 50-55 kD and type II receptors of about 70-80 kD. Type II receptors bind ligands in the absence of type I receptors, but they require their respective type I receptors for signaling, whereas type I receptors require their respective type II receptors for ligand binding. Mutations in this gene have been associated with primary pulmonary hypertension. Several transcript variants encoding two different isoforms have been found for thi

**matters needing attention**

Avoid repeated freezing and thawing!

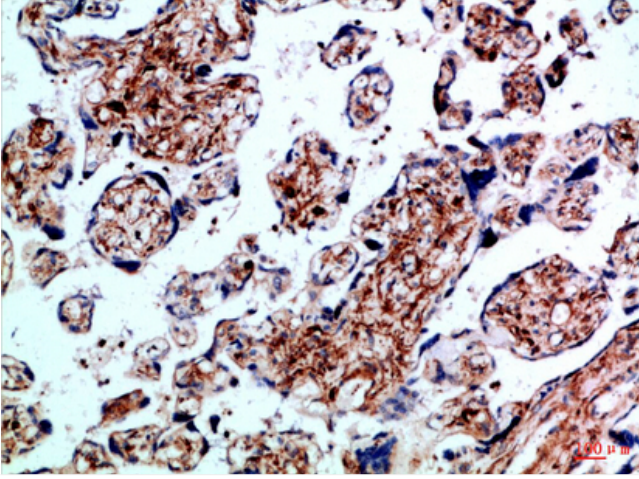
**Usage suggestions**

This product can be used in immunological reaction related experiments. For more information, please consult technical personnel.

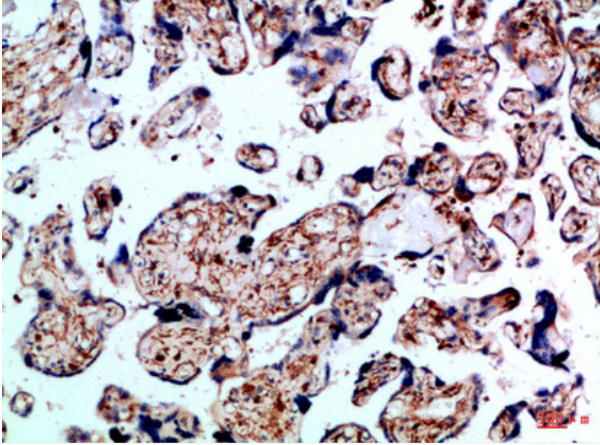
Nanjing BYabscience technology Co.,Ltd



## Products Images



Immunohistochemical analysis of paraffin-embedded Human-placenta, antibody was diluted at 1:100



Immunohistochemical analysis of paraffin-embedded Human-placenta, antibody was diluted at 1:100