



CD42c Polyclonal Antibody

Catalog No	BYab-10734
Isotype	IgG
Reactivity	Human;Mouse;Rat
Applications	IHC;IF;ELISA
Gene Name	GP1BB
Protein Name	Platelet glycoprotein Ib beta chain (GP-Ib beta) (GPIb-beta) (GPIbB) (Antigen CD42b-beta) (CD antigen CD42c)
Immunogen	Synthetic peptide from human protein at AA range: 90-150
Specificity	The antibody detects endogenous CD42c
Formulation	Liquid in PBS containing 50% glycerol, 0.5% BSA and 0.02% sodium azide.
Source	Polyclonal, Rabbit,IgG
Purification	The antibody was affinity-purified from rabbit antiserum by affinity-chromatography using epitope-specific immunogen.
Dilution	IHC-p 1:50-200, ELISA 1:10000-20000. IF 1:50-200
Concentration	1 mg/ml
Purity	≥90%
Storage Stability	-20°C/1 year
Synonyms	Platelet glycoprotein Ib beta chain (GP-Ib beta;GPIb-beta;GPIbB;Antigen CD42b-beta;CD antigen CD42c)
Observed Band	
Cell Pathway	Membrane; Single-pass type I membrane protein.
Tissue Specificity	Expressed in heart and brain.
Function	disease:Defects in GP1BB are a cause of Bernard-Soulier syndrome (BSS) [MIM:231200]; also known as giant platelet disease (GPD). BSS patients have unusually large platelets and have a clinical bleeding tendency.,function:Gp-Ib, a surface membrane protein of platelets, participates in the formation of platelet plugs by binding to von Willebrand factor, which is already bound to the subendothelium.,miscellaneous:Platelet activation apparently involves disruption of the macromolecular complex of GP-Ib with the platelet glycoprotein IX (GP-IX) and dissociation of GP-Ib from the actin-binding protein.,similarity:Contains 1 LRR (leucine-rich) repeat.,subunit:GP-Ib alpha and beta are disulfide linked. GP-IX is complexed with the GP-Ib heterodimer via a non covalent linkage.,tissue specificity:Expressed in heart and brain.,

Nanjing BYabscience technology Co.,Ltd



Background

Platelet glycoprotein Ib (GPIb) is a heterodimeric transmembrane protein consisting of a disulfide-linked 140 kD alpha chain and 22 kD beta chain. It is part of the GPIb-V-IX system that constitutes the receptor for von Willebrand factor (VWF), and mediates platelet adhesion in the arterial circulation. GPIb alpha chain provides the VWF binding site, and GPIb beta contributes to surface expression of the receptor and participates in transmembrane signaling through phosphorylation of its intracellular domain. Mutations in the GPIb beta subunit have been associated with Bernard-Soulier syndrome, velocardiofacial syndrome and giant platelet disorder. The 206 amino acid precursor of GPIb beta is synthesized from a 1.0 kb mRNA expressed in plateletes and megakaryocytes. A 411 amino acid protein arising from a longer, unspliced transcript in endothelial cells has been described; however, t

matters needing attention

Avoid repeated freezing and thawing!

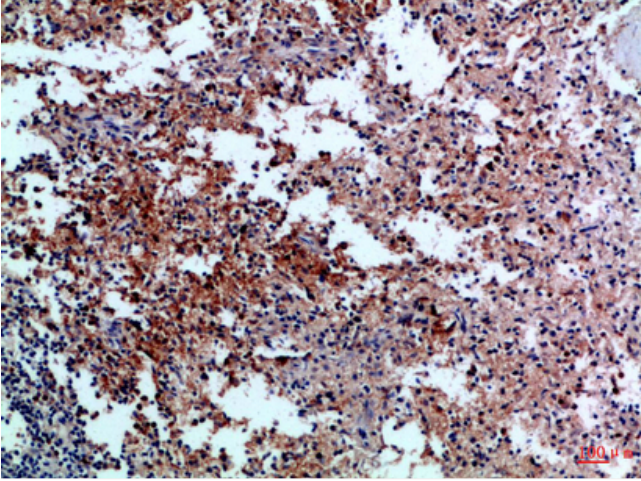
Usage suggestions

This product can be used in immunological reaction related experiments. For more information, please consult technical personnel.

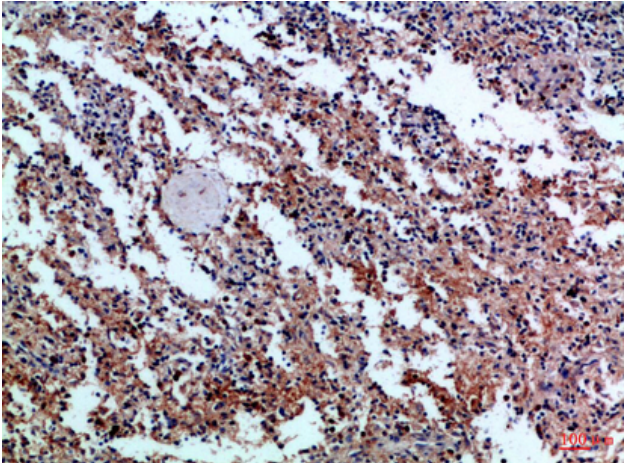
Nanjing BYabscience technology Co.,Ltd



Products Images



Immunohistochemical analysis of paraffin-embedded Human-spleen, antibody was diluted at 1:100



Immunohistochemical analysis of paraffin-embedded Human-spleen, antibody was diluted at 1:100