



# CD1A/B Polyclonal Antibody

<b>Catalog No</b>	BYab-10733
<b>Isotype</b>	IgG
<b>Reactivity</b>	Human;Rat;Mouse;
<b>Applications</b>	IHC;IF;ELISA
<b>Gene Name</b>	CD1A CD1B
<b>Protein Name</b>	T-cell surface glycoprotein CD1A/B (CD antigen CD1A/B)
<b>Immunogen</b>	Synthetic peptide from human protein at AA range: 220-270
<b>Specificity</b>	The antibody detects endogenous CD1A/B
<b>Formulation</b>	Liquid in PBS containing 50% glycerol, 0.5% BSA and 0.02% sodium azide.
<b>Source</b>	Polyclonal, Rabbit,IgG
<b>Purification</b>	The antibody was affinity-purified from rabbit antiserum by affinity-chromatography using epitope-specific immunogen.
<b>Dilution</b>	IHC-p 1:50-200, ELISA 1:10000-20000. IF 1:50-200
<b>Concentration</b>	1 mg/ml
<b>Purity</b>	≥90%
<b>Storage Stability</b>	-20°C/1 year
<b>Synonyms</b>	
<b>Observed Band</b>	
<b>Cell Pathway</b>	Cell membrane ; Single-pass type I membrane protein . Membrane raft ; Single-pass type I membrane protein . Endosome membrane ; Single-pass type I membrane protein . Subject to intracellular trafficking between the cell membrane and endosomes (PubMed:11231314). Localizes to cell surface lipid rafts (PubMed:18178838). .
<b>Tissue Specificity</b>	Expressed on cortical thymocytes, epidermal Langerhans cells, dendritic cells, on certain T-cell leukemias, and in various other tissues.
<b>Function</b>	function:Antigen-presenting protein that binds self and non-self lipid and glycolipid antigens and presents them to T-cell receptors on natural killer T-cells.,miscellaneous:During protein synthesis and maturation, CD1 family members bind endogenous lipids that are replaced by lipid or glycolipid antigens when the proteins are internalized and pass through endosomes, before trafficking back to the cell surface.,similarity:Contains 1 Ig-like (immunoglobulin-like) domain.,subcellular location:Subject to intracellular trafficking between the cell membrane and endosomes. Localizes to cell surface

Nanjing BYabscience technology Co.,Ltd



lipid rafts.,subunit:Heterodimer with B2M (beta-2-microglobulin). Interacts with CD74.,tissue specificity:Expressed on cortical thymocytes, epidermal Langerhans cells, dendritic cells, on certain T-cell leukemias, and in various other tissues.,

#### Background

This gene encodes a member of the CD1 family of transmembrane glycoproteins, which are structurally related to the major histocompatibility complex (MHC) proteins and form heterodimers with beta-2-microglobulin. The CD1 proteins mediate the presentation of primarily lipid and glycolipid antigens of self or microbial origin to T cells. The human genome contains five CD1 family genes organized in a cluster on chromosome 1. The CD1 family members are thought to differ in their cellular localization and specificity for particular lipid ligands. The protein encoded by this gene localizes to the plasma membrane and to recycling vesicles of the early endocytic system. Alternative splicing results in multiple transcript variants. [provided by RefSeq, Mar 2016],

#### matters needing attention

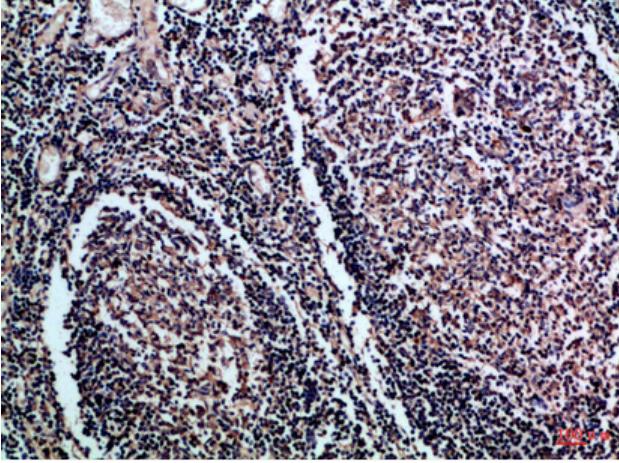
Avoid repeated freezing and thawing!

#### Usage suggestions

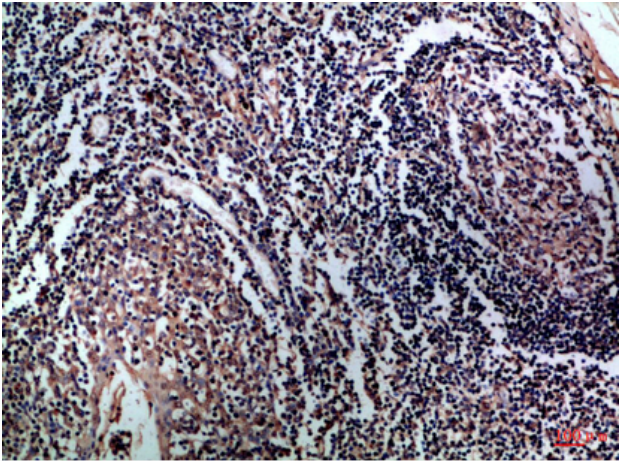
This product can be used in immunological reaction related experiments. For more information, please consult technical personnel.



## Products Images



Immunohistochemical analysis of paraffin-embedded Human-tonsil, antibody was diluted at 1:100



Immunohistochemical analysis of paraffin-embedded Human-tonsil, antibody was diluted at 1:100