



# HLA-DMβ Polyclonal Antibody

<b>Catalog No</b>	BYab-10732
<b>Isotype</b>	IgG
<b>Reactivity</b>	Human
<b>Applications</b>	IHC;IF;ELISA
<b>Gene Name</b>	HLA-DMB DMB RING7
<b>Protein Name</b>	HLA class II histocompatibility antigen, DM beta chain (MHC class II antigen DMB) (Really interesting new gene 7 protein)
<b>Immunogen</b>	Synthetic peptide from human protein at AA range: 40-100
<b>Specificity</b>	The antibody detects endogenous HLA-DMβ
<b>Formulation</b>	Liquid in PBS containing 50% glycerol, 0.5% BSA and 0.02% sodium azide.
<b>Source</b>	Polyclonal, Rabbit,IgG
<b>Purification</b>	The antibody was affinity-purified from rabbit antiserum by affinity-chromatography using epitope-specific immunogen.
<b>Dilution</b>	IHC-p 1:50-200, ELISA 1:10000-20000. IF 1:50-200
<b>Concentration</b>	1 mg/ml
<b>Purity</b>	≥90%
<b>Storage Stability</b>	-20°C/1 year
<b>Synonyms</b>	HLA class II histocompatibility antigen, DM beta chain (MHC class II antigen DMB;Really interesting new gene 7 protein)
<b>Observed Band</b>	
<b>Cell Pathway</b>	Late endosome membrane ; Single-pass type I membrane protein . Lysosome membrane ; Single-pass type I membrane protein . Localizes to late endocytic compartment. Associates with lysosome membranes.
<b>Tissue Specificity</b>	Blood,Lymph,Plasma,Spleen,
<b>Function</b>	domain:The YXXZ (Tyr-Xaa-Xaa-Zaa, where Zaa is a hydrophobic residue) motif mediates the targeting to the lysosomal compartments.,function:Plays a critical role in catalyzing the release of class II HLA-associated invariant chain-derived peptides (CLIP) from newly synthesized class II HLA molecules and freeing the peptide binding site for acquisition of antigenic peptides.,polymorphism:The following alleles of DMB are known: DMB*0101, DMB*0102, DMB*0103, DMB*0104 (DMB3.4), DMB*0105 and DMB*0106. The sequence shown is that of DMB*0101.,similarity:Belongs to the MHC class II family.,similarity:Contains 1 Ig-like C1-type (immunoglobulin-like) domain.,subcellular location:Localizes to late endocytic compartment. Associates with lysosome

**Nanjing BYabscience technology Co.,Ltd**



membranes.,subunit:Heterodimer of an alpha chain (DMA) and a beta chain (DMB).,

#### Background

HLA-DMB belongs to the HLA class II beta chain paralogues. This class II molecule is a heterodimer consisting of an alpha (DMA) and a beta (DMB) chain, both anchored in the membrane. It is located in intracellular vesicles. DM plays a central role in the peptide loading of MHC class II molecules by helping to release the CLIP (class II-associated invariant chain peptide) molecule from the peptide binding site. Class II molecules are expressed in antigen presenting cells (APC: B lymphocytes, dendritic cells, macrophages). The beta chain is approximately 26-28 kDa and its gene contains 6 exons. Exon one encodes the leader peptide, exons 2 and 3 encode the two extracellular domains, exon 4 encodes the transmembrane domain and exon 5 encodes the cytoplasmic tail. [provided by RefSeq, Jul 2008],

#### matters needing attention

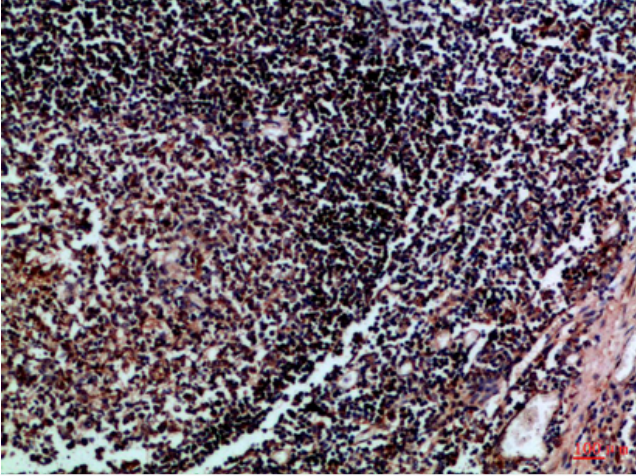
Avoid repeated freezing and thawing!

#### Usage suggestions

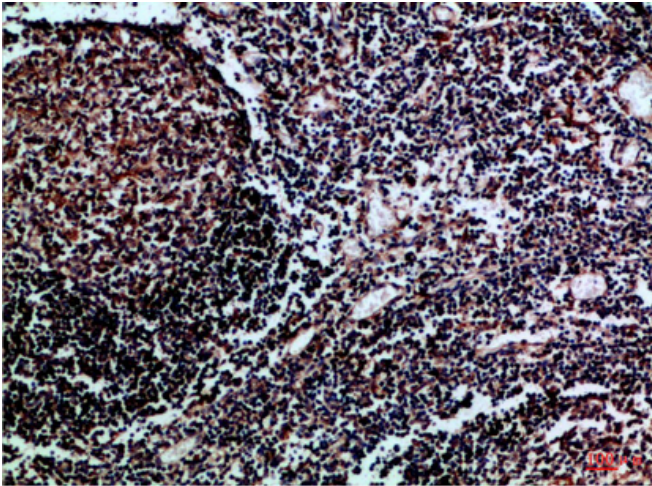
This product can be used in immunological reaction related experiments. For more information, please consult technical personnel.



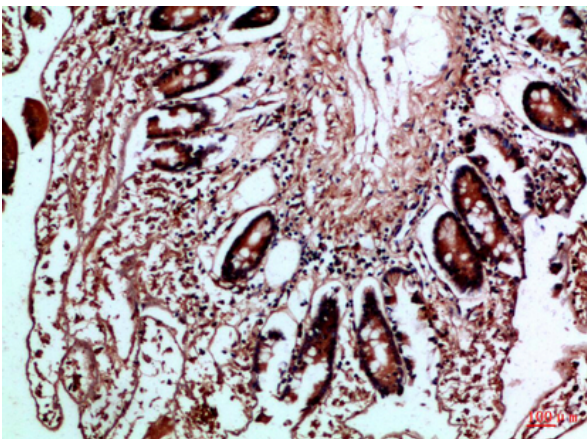
## Products Images



Immunohistochemical analysis of paraffin-embedded Human-tonsil, antibody was diluted at 1:100



Immunohistochemical analysis of paraffin-embedded Human-tonsil, antibody was diluted at 1:100



Immunohistochemical analysis of paraffin-embedded Human-colon, antibody was diluted at 1:100