



# Cytoglobin Polyclonal Antibody

<b>Catalog No</b>	BYab-10730
<b>Isotype</b>	IgG
<b>Reactivity</b>	Human;Mouse;Rat
<b>Applications</b>	IHC;IF;ELISA
<b>Gene Name</b>	CYGB STAP
<b>Protein Name</b>	Cytoglobin (Histoglobin) (HGb) (Stellate cell activation-associated protein)
<b>Immunogen</b>	Synthetic peptide from human protein at AA range: 1-60
<b>Specificity</b>	The antibody detects endogenous Cytoglobin
<b>Formulation</b>	Liquid in PBS containing 50% glycerol, 0.5% BSA and 0.02% sodium azide.
<b>Source</b>	Polyclonal, Rabbit,IgG
<b>Purification</b>	The antibody was affinity-purified from rabbit antiserum by affinity-chromatography using epitope-specific immunogen.
<b>Dilution</b>	IHC-p 1:50-200, ELISA 1:10000-20000. IF 1:50-200
<b>Concentration</b>	1 mg/ml
<b>Purity</b>	≥90%
<b>Storage Stability</b>	-20°C/1 year
<b>Synonyms</b>	Cytoglobin (Histoglobin;HGb;Stellate cell activation-associated protein)
<b>Observed Band</b>	
<b>Cell Pathway</b>	Cytoplasm .
<b>Tissue Specificity</b>	Ubiquitously expressed. Highest expression in heart, stomach, bladder and small intestine.
<b>Function</b>	function:May have a protective function during conditions of oxidative stress. May be involved in intracellular oxygen storage or transfer.,similarity:Belongs to the globin family.,subunit:Homodimer; disulfide-linked.,tissue specificity:Ubiquitously expressed. Highest expression in heart, stomach, bladder and small intestine.,
<b>Background</b>	This gene encodes a globin protein found in vertebrate cells. The encoded protein is described as a hexacoordinate hemoglobin which binds ligand differently from the pentacoordinate hemoglobins involved in oxygen transport, and may be involved in protection during oxidative stress. This gene is located on chromosome 17 in the same region as a retinal gene which is mutated in progressive rod-cone degeneration, but in the opposite orientation. [provided by RefSeq, Jan 2012],

Nanjing BYabscience technology Co.,Ltd



**matters needing attention**

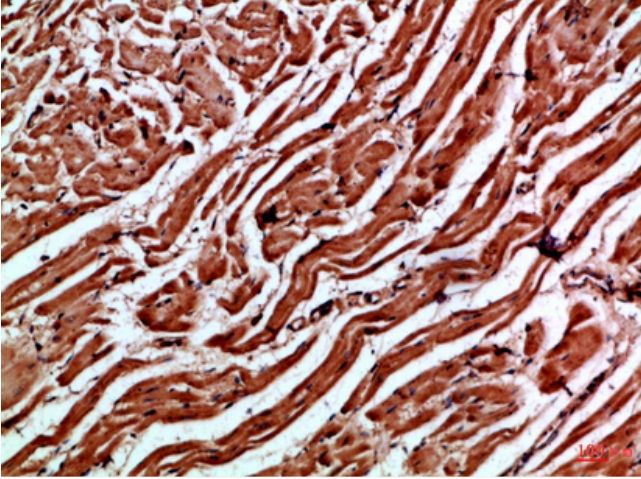
Avoid repeated freezing and thawing!

**Usage suggestions**

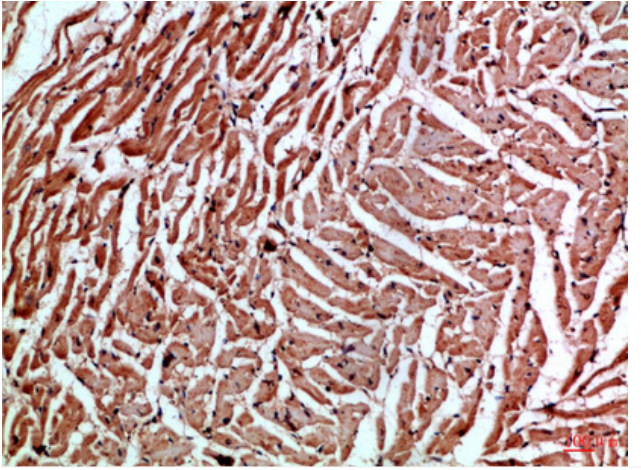
This product can be used in immunological reaction related experiments. For more information, please consult technical personnel.



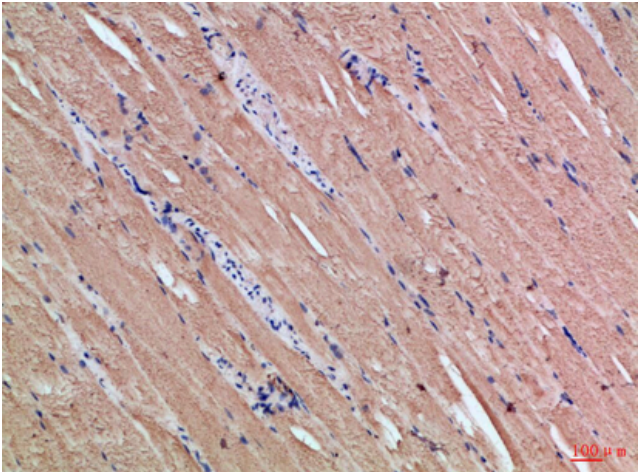
## Products Images



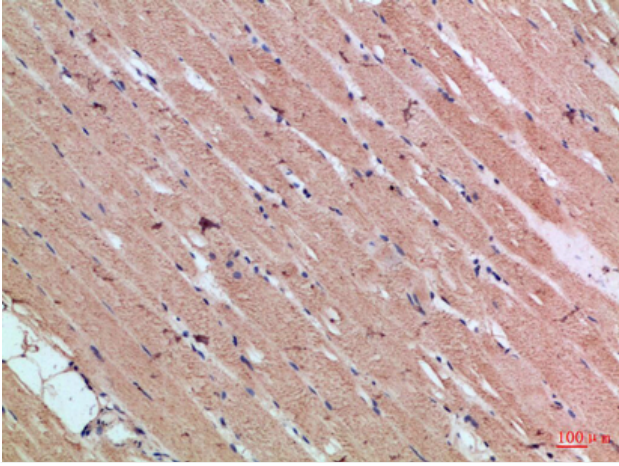
Immunohistochemical analysis of paraffin-embedded Human-heart, antibody was diluted at 1:100



Immunohistochemical analysis of paraffin-embedded Human-heart, antibody was diluted at 1:100



Immunohistochemical analysis of paraffin-embedded Human-skeletal-muscle, antibody was diluted at 1:100



Immunohistochemical analysis of paraffin-embedded Human-skeletal-muscle, antibody was diluted at 1:100