



GRB7 Polyclonal Antibody

Catalog No	BYab-10729
Isotype	IgG
Reactivity	Human;Mouse;Rat
Applications	IHC;IF;ELISA
Gene Name	GRB7
Protein Name	Growth factor receptor-bound protein 7 (B47) (Epidermal growth factor receptor GRB-7) (GRB7 adapter protein)
Immunogen	Synthetic peptide from human protein at AA range: 30-100
Specificity	The antibody detects endogenous GRB7
Formulation	Liquid in PBS containing 50% glycerol, 0.5% BSA and 0.02% sodium azide.
Source	Polyclonal, Rabbit,IgG
Purification	The antibody was affinity-purified from rabbit antiserum by affinity-chromatography using epitope-specific immunogen.
Dilution	IHC-p 1:50-200, ELISA 1:10000-20000. IF 1:50-200
Concentration	1 mg/ml
Purity	≥90%
Storage Stability	-20°C/1 year
Synonyms	Growth factor receptor-bound protein 7 (B47;Epidermal growth factor receptor GRB-7;GRB7 adapter protein)
Observed Band	
Cell Pathway	Cytoplasm . Cell junction, focal adhesion . Cell membrane; Peripheral membrane protein; Cytoplasmic side . Cytoplasmic granule . Cell projection . Predominantly cytoplasmic. Detected in stress granules, where mRNA is stored under stress conditions. .
Tissue Specificity	Liver,Lung,Oesophageal carcinoma,Thalamus,
Function	alternative products:At least 2 isoforms are produced,function:Interacts with the cytoplasmic domain of the epidermal growth factor receptor which is then inhibited. The interaction is mediated by the SH2 domain. Also binds to ERBB2.,PTM:Phosphorylated on tyrosine residues.,similarity:Belongs to the GRB7/10/14 family.,similarity:Contains 1 PH domain.,similarity:Contains 1 Ras-associating domain.,similarity:Contains 1 SH2 domain.,subunit:Interacts with RND1.,

Nanjing BYabscience technology Co.,Ltd



Background

The product of this gene belongs to a small family of adapter proteins that are known to interact with a number of receptor tyrosine kinases and signaling molecules. This gene encodes a growth factor receptor-binding protein that interacts with epidermal growth factor receptor (EGFR) and ephrin receptors. The protein plays a role in the integrin signaling pathway and cell migration by binding with focal adhesion kinase (FAK). Several transcript variants encoding two different isoforms have been found for this gene. [provided by RefSeq, Jun 2011],

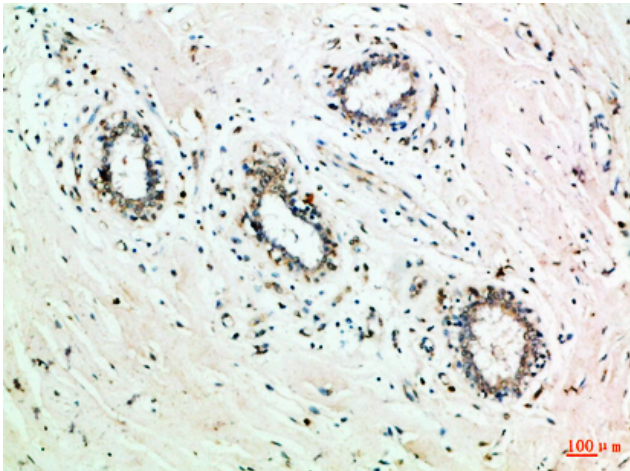
matters needing attention

Avoid repeated freezing and thawing!

Usage suggestions

This product can be used in immunological reaction related experiments. For more information, please consult technical personnel.

Products Images



Immunohistochemical analysis of paraffin-embedded Human-breast, antibody was diluted at 1:100