



# MIG Polyclonal Antibody

<b>Catalog No</b>	BYab-10727
<b>Isotype</b>	IgG
<b>Reactivity</b>	Human;Rat;Mouse;
<b>Applications</b>	IHC;IF;ELISA
<b>Gene Name</b>	CXCL9 CMK MIG SCYB9
<b>Protein Name</b>	C-X-C motif chemokine 9 (Gamma-interferon-induced monokine) (Monokine induced by interferon-gamma) (HuMIG) (MIG) (Small-inducible cytokine B9)
<b>Immunogen</b>	Synthetic peptide from human protein at AA range: 90-125
<b>Specificity</b>	The antibody detects endogenous MIG
<b>Formulation</b>	Liquid in PBS containing 50% glycerol, 0.5% BSA and 0.02% sodium azide.
<b>Source</b>	Polyclonal, Rabbit,IgG
<b>Purification</b>	The antibody was affinity-purified from rabbit antiserum by affinity-chromatography using epitope-specific immunogen.
<b>Dilution</b>	IHC-p 1:50-200, ELISA 1:10000-20000. IF 1:50-200
<b>Concentration</b>	1 mg/ml
<b>Purity</b>	≥90%
<b>Storage Stability</b>	-20°C/1 year
<b>Synonyms</b>	C-X-C motif chemokine 9 (Gamma-interferon-induced monokine;Monokine induced by interferon-gamma;HuMIG;MIG;Small-inducible cytokine B9)
<b>Observed Band</b>	
<b>Cell Pathway</b>	Secreted.
<b>Tissue Specificity</b>	Keratinocyte,Monocyte,Placenta,Skin,
<b>Function</b>	function:Cytokine that affects the growth, movement, or activation state of cells that participate in immune and inflammatory response. Chemotactic for activated T-cells. Binds to CXCR3.,induction:By interferon gamma. The induction is enhanced by TNF-alpha in dermal fibroblasts and vein endothelial cells.,online information:CXCL9 entry,similarity:Belongs to the intercrine alpha (chemokine Cx) family.,
<b>Background</b>	This antimicrobial gene encodes a protein thought to be involved in T cell trafficking. The encoded protein binds to C-X-C motif chemokine 3 and is a chemoattractant for lymphocytes but not for neutrophils. [provided by RefSeq, Sep 2014],

Nanjing BYabscience technology Co.,Ltd



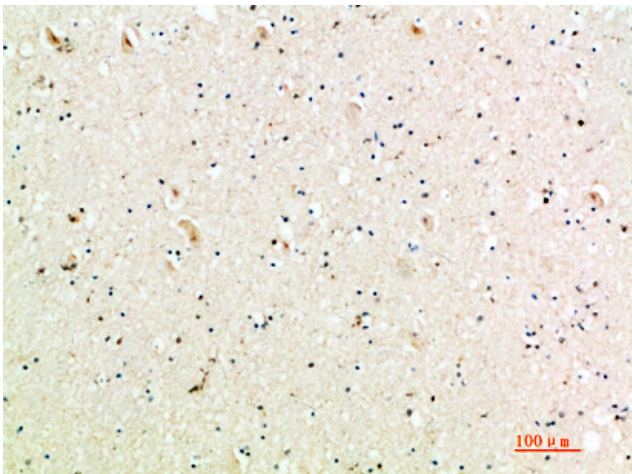
**matters needing attention**

Avoid repeated freezing and thawing!

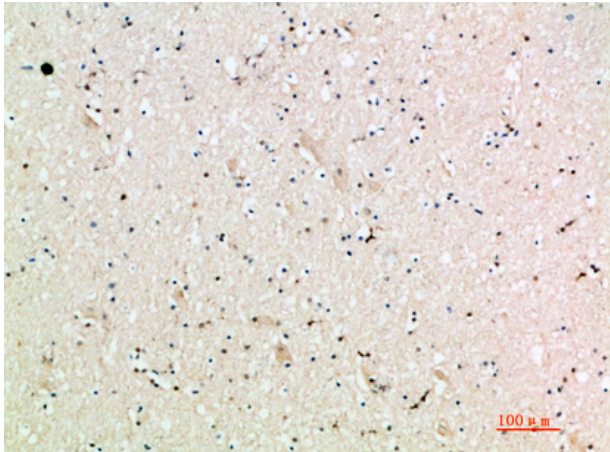
**Usage suggestions**

This product can be used in immunological reaction related experiments. For more information, please consult technical personnel.

## Products Images



Immunohistochemical analysis of paraffin-embedded human-brain, antibody was diluted at 1:200



Immunohistochemical analysis of paraffin-embedded human-brain, antibody was diluted at 1:200