



ASH1L rabbit pAb

Catalog No	BYab-09700
Isotype	IgG
Reactivity	Human;Mouse
Applications	WB
Gene Name	ASH1L KIAA1420 KMT2H
Protein Name	Histone-lysine N-methyltransferase ASH1L (EC 2.1.1.43) (ASH1-like protein) (huASH1) (Absent small and homeotic disks protein 1 homolog) (Lysine N-methyltransferase 2H)
Immunogen	Synthesized peptide derived from human ASH1L AA range: 1323-1373
Specificity	This antibody detects endogenous levels of human ASH1L
Formulation	Liquid in PBS containing 50% glycerol, 0.5% BSA and 0.02% sodium azide.
Source	Polyclonal, Rabbit,IgG
Purification	The antibody was affinity-purified from rabbit serum by affinity-chromatography using specific immunogen.
Dilution	WB 1:1000-2000
Concentration	1 mg/ml
Purity	≥90%
Storage Stability	-20°C/1 year
Synonyms	
Observed Band	
Cell Pathway	Nucleus . Cell junction, tight junction . Chromosome . The relevance of tight junction localization is however unclear. .
Tissue Specificity	Widely expressed, with highest level in brain, heart and kidney.
Function	
Background	
matters needing attention	Avoid repeated freezing and thawing!

Nanjing BYabscience technology Co.,Ltd

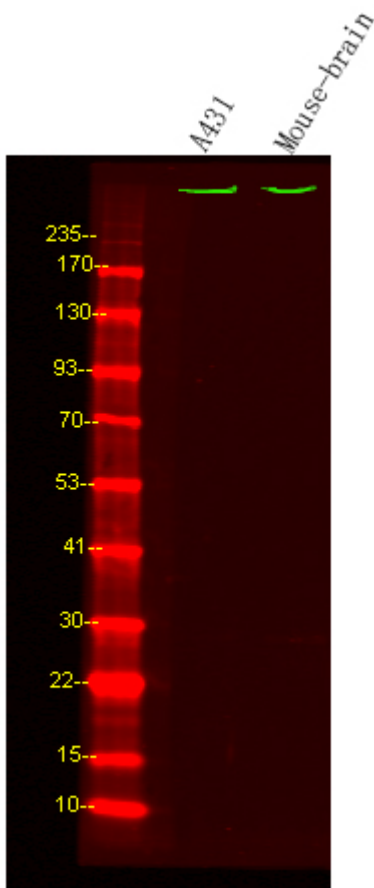


Usage suggestions

This product can be used in immunological reaction related experiments. For more information, please consult technical personnel.

Products Images

Western Blot analysis of A431 and mouse brain lysis, using primary antibody at 1:1000 dilution. Secondary antibody(catalog#:RS23920) was diluted at 1:10000



Nanjing BYabscience technology Co.,Ltd