



SIAH3 rabbit pAb

Catalog No	BYab-09173
Isotype	IgG
Reactivity	Human;Rat;Mouse;
Applications	WB
Gene Name	SIAH3
Protein Name	SIAH3
Immunogen	Synthesized peptide derived from human SIAH3 AA range: 101-151
Specificity	This antibody detects endogenous levels of SIAH3 at Human
Formulation	Liquid in PBS containing 50% glycerol, 0.5% BSA and 0.02% sodium azide.
Source	Polyclonal, Rabbit,IgG
Purification	The antibody was affinity-purified from rabbit serum by affinity-chromatography using specific immunogen.
Dilution	WB 1: 500-2000
Concentration	1 mg/ml
Purity	≥90%
Storage Stability	-20°C/1 year
Synonyms	
Observed Band	
Cell Pathway	Mitochondrion .
Tissue Specificity	
Function	sequence caution:Chimeric cDNA. A chimeric cDNA originating from chromosomes 13 and 19.,similarity:Belongs to the SINA (Seven in absentia) family.,similarity:Contains 1 SIAH-type zinc finger.,
Background	
matters needing attention	Avoid repeated freezing and thawing!

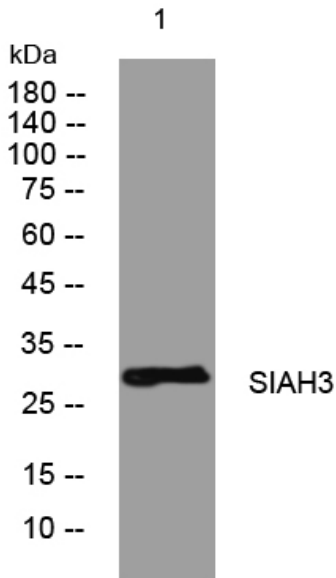
Nanjing BYabscience technology Co.,Ltd



Usage suggestions

This product can be used in immunological reaction related experiments. For more information, please consult technical personnel.

Products Images



Western blot analysis of lysates from HeLa cells, primary antibody was diluted at 1:1000, 4° over night