



BBX rabbit pAb

Catalog No	BYab-09163
Isotype	IgG
Reactivity	Human; Mouse
Applications	WB
Gene Name	BBX HBP2
Protein Name	BBX
Immunogen	Synthesized peptide derived from human BBX AA range: 641-691
Specificity	This antibody detects endogenous levels of BBX at Human/Mouse
Formulation	Liquid in PBS containing 50% glycerol, 0.5% BSA and 0.02% sodium azide.
Source	Polyclonal, Rabbit,IgG
Purification	The antibody was affinity-purified from rabbit serum by affinity-chromatography using specific immunogen.
Dilution	WB 1: 500-2000
Concentration	1 mg/ml
Purity	≥90%
Storage Stability	-20°C/1 year
Synonyms	
Observed Band	
Cell Pathway	Nucleus .
Tissue Specificity	
Function	function:Transcription factor that is necessary for cell cycle progression from G1 to S phase.,sequence caution:Contaminating sequence. Potential poly-A sequence.,similarity:Contains 1 HMG box DNA-binding domain.,
Background	
matters needing attention	Avoid repeated freezing and thawing!

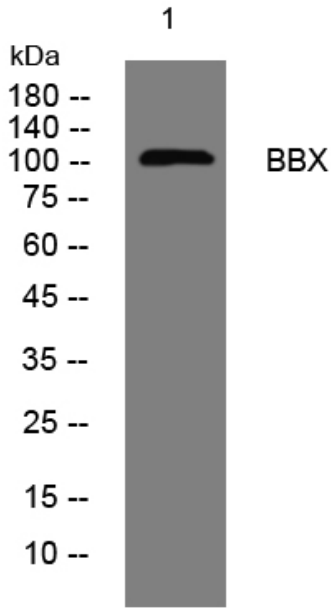
Nanjing BYabscience technology Co.,Ltd



Usage suggestions

This product can be used in immunological reaction related experiments. For more information, please consult technical personnel.

Products Images



Western blot analysis of lysates from THP-1 cells, primary antibody was diluted at 1:1000, 4° over night