



PLXA3 rabbit pAb

| | |
|---------------------------|---|
| Catalog No | BYab-09157 |
| Isotype | IgG |
| Reactivity | Human; Mouse;Rat |
| Applications | WB |
| Gene Name | PLXNA3 PLXN4 SEX |
| Protein Name | PLXA3 |
| Immunogen | Synthesized peptide derived from human PLXA3 AA range: 1728-1778 |
| Specificity | This antibody detects endogenous levels of PLXA3 at Human/Mouse/Rat |
| Formulation | Liquid in PBS containing 50% glycerol, 0.5% BSA and 0.02% sodium azide. |
| Source | Polyclonal, Rabbit,IgG |
| Purification | The antibody was affinity-purified from rabbit serum by affinity-chromatography using specific immunogen. |
| Dilution | WB 1: 500-2000 |
| Concentration | 1 mg/ml |
| Purity | ≥90% |
| Storage Stability | -20°C/1 year |
| Synonyms | |
| Observed Band | |
| Cell Pathway | Cell membrane ; Single-pass type I membrane protein . |
| Tissue Specificity | |
| Function | function:Putative receptor involved in the development of neural and epithelial tissues.,similarity:Belongs to the plexin family.,similarity:Contains 1 Sema domain.,similarity:Contains 4 IPT/TIG domains.,tissue specificity:Predominant in neural tissue during development (By similarity); widely expressed in adult tissue., |
| Background | This gene encodes a member of the plexin class of proteins. The encoded protein is a class 3 semaphorin receptor, and may be involved in cytoskeletal remodeling and as well as apoptosis. Studies of a similar gene in zebrafish suggest that it is important for axon pathfinding in the developing nervous system. This gene may be associated with tumor progression. [provided by RefSeq, Aug 2013], |

Nanjing BYabscience technology Co.,Ltd



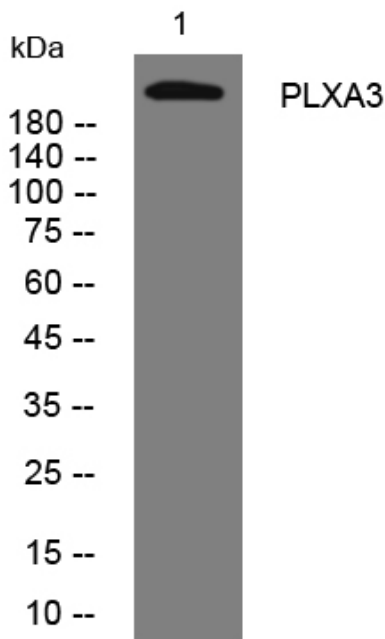
matters needing attention

Avoid repeated freezing and thawing!

Usage suggestions

This product can be used in immunological reaction related experiments. For more information, please consult technical personnel.

Products Images



Western blot analysis of lysates from HeLa cells, primary antibody was diluted at 1:1000, 4° over night