



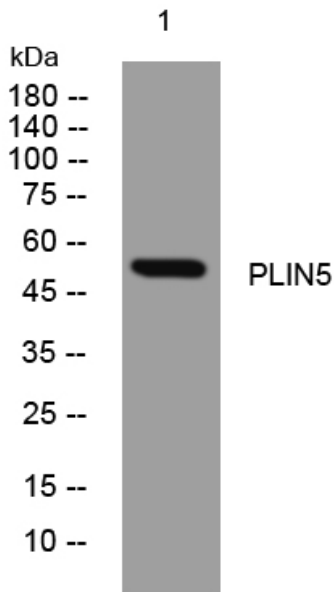
PLIN5 rabbit pAb

Catalog No	BYab-09147
Isotype	IgG
Reactivity	Human; Mouse
Applications	WB
Gene Name	PLIN5 LSDP5
Protein Name	PLIN5
Immunogen	Synthesized peptide derived from human PLIN5 AA range: 80-130
Specificity	This antibody detects endogenous levels of PLIN5 at Human/Mouse
Formulation	Liquid in PBS containing 50% glycerol, 0.5% BSA and 0.02% sodium azide.
Source	Polyclonal, Rabbit,IgG
Purification	The antibody was affinity-purified from rabbit serum by affinity-chromatography using specific immunogen.
Dilution	WB 1: 500-2000
Concentration	1 mg/ml
Purity	≥90%
Storage Stability	-20°C/1 year
Synonyms	
Observed Band	
Cell Pathway	Lipid droplet . Cytoplasm . Mitochondrion . Lipid droplet surface-associated. Exchanges between lipid droplets and the cytoplasm. .
Tissue Specificity	Expressed in skeletal muscle, liver, heart and kidney.
Function	
Background	Members of the perilipin family, such as PLIN5, coat intracellular lipid storage droplets and protect them from lipolytic degradation (Dalen et al., 2007 [PubMed 17234449]).[supplied by OMIM, Feb 2010],
matters needing attention	Avoid repeated freezing and thawing!
Usage suggestions	This product can be used in immunological reaction related experiments. For more information, please consult technical personnel.

Nanjing BYabscience technology Co.,Ltd



Products Images



Western blot analysis of lysates from K562 cells,
primary antibody was diluted at 1:1000, 4° over night