



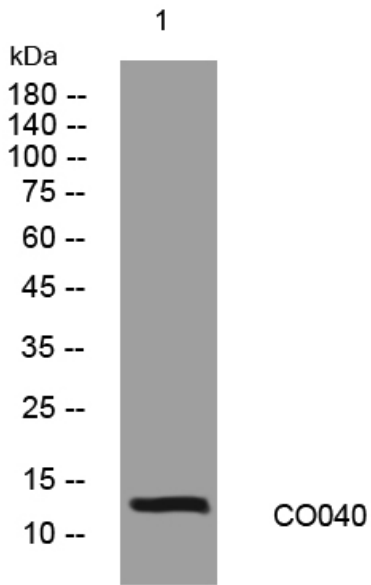
# CO040 rabbit pAb

|                                  |   |
|----------------------------------|---|
| <b>Catalog No</b>                | BYab-09136  |
| <b>Isotype</b>                   | IgG   |
| <b>Reactivity</b>                | Human; Mouse;Rat  |
| <b>Applications</b>              | WB  |
| <b>Gene Name</b>                 | C15orf40  |
| <b>Protein Name</b>              | CO040   |
| <b>Immunogen</b>                 | Synthesized peptide derived from human CO040 AA range: 16-66  |
| <b>Specificity</b>               | This antibody detects endogenous levels of CO040 at Human/Mouse/Rat   |
| <b>Formulation</b>               | Liquid in PBS containing 50% glycerol, 0.5% BSA and 0.02% sodium azide.   |
| <b>Source</b>                    | Polyclonal, Rabbit,IgG  |
| <b>Purification</b>              | The antibody was affinity-purified from rabbit serum by affinity-chromatography using specific immunogen.                         |
| <b>Dilution</b>                  | WB 1: 500-2000  |
| <b>Concentration</b>             | 1 mg/ml   |
| <b>Purity</b>                    | ≥90%  |
| <b>Storage Stability</b>         | -20°C/1 year  |
| <b>Synonyms</b>                  |   |
| <b>Observed Band</b>             |   |
| <b>Cell Pathway</b>              |   |
| <b>Tissue Specificity</b>        |   |
| <b>Function</b>                  | similarity:Belongs to the UPF0235 family.,  |
| <b>Background</b>                |   |
| <b>matters needing attention</b> | Avoid repeated freezing and thawing!  |
| <b>Usage suggestions</b>         | This product can be used in immunological reaction related experiments. For more information, please consult technical personnel. |

Nanjing BYabscience technology Co.,Ltd



## Products Images



Western blot analysis of lysates from MCF-7 cells,  
primary antibody was diluted at 1:1000, 4° over night