



DDX47 rabbit pAb

Catalog No	BYab-09132
Isotype	IgG
Reactivity	Human; Mouse
Applications	WB
Gene Name	DDX47
Protein Name	DDX47
Immunogen	Synthesized peptide derived from human DDX47 AA range: 86-136
Specificity	This antibody detects endogenous levels of DDX47 at Human/Mouse
Formulation	Liquid in PBS containing 50% glycerol, 0.5% BSA and 0.02% sodium azide.
Source	Polyclonal, Rabbit,IgG
Purification	The antibody was affinity-purified from rabbit serum by affinity-chromatography using specific immunogen.
Dilution	WB 1: 500-2000
Concentration	1 mg/ml
Purity	≥90%
Storage Stability	-20°C/1 year
Synonyms	
Observed Band	
Cell Pathway	Nucleus, nucleolus . Localizes in the nucleolar-organizing region during ribosome biogenesis.
Tissue Specificity	Expressed in skin, lung and breast. Also expressed in the brain.
Function	similarity:Belongs to the DEAD box helicase family.,similarity:Belongs to the DEAD box helicase family. DDX47/RRP3 subfamily.,similarity:Contains 1 helicase ATP-binding domain.,similarity:Contains 1 helicase C-terminal.,
Background	This gene encodes a member of the DEAD box protein family. DEAD box proteins, characterized by the conserved motif Asp-Glu-Ala-Asp (DEAD), are putative RNA helicases. They are implicated in a number of cellular processes involving alteration of RNA secondary structure, such as translation initiation, nuclear and mitochondrial splicing, and ribosome and spliceosome assembly. Based on their distribution patterns, some members of this family are believed to be involved in embryogenesis, spermatogenesis, and cellular growth and division. The protein encoded by this gene can shuttle between the nucleus and the

Nanjing BYabscience technology Co.,Ltd



cytoplasm, and has an RNA-independent ATPase activity. Two alternatively spliced transcript variants encoding distinct isoforms have been found for this gene. [provided by RefSeq, Jul 2008],

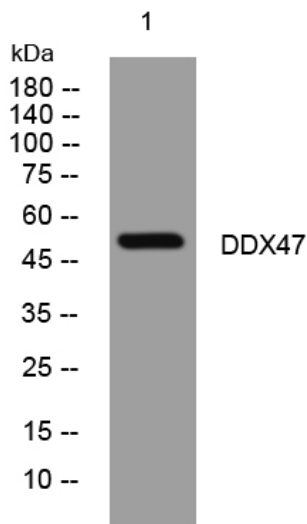
matters needing attention

Avoid repeated freezing and thawing!

Usage suggestions

This product can be used in immunological reaction related experiments. For more information, please consult technical personnel.

Products Images



Western blot analysis of lysates from SW480 cells, primary antibody was diluted at 1:1000, 4° over night