



DBR1 rabbit pAb

Catalog No	BYab-09125
Isotype	IgG
Reactivity	Human; Mouse
Applications	WB
Gene Name	DBR1
Protein Name	DBR1
Immunogen	Synthesized peptide derived from human DBR1 AA range: 230-280
Specificity	This antibody detects endogenous levels of DBR1 at Human/Mouse
Formulation	Liquid in PBS containing 50% glycerol, 0.5% BSA and 0.02% sodium azide.
Source	Polyclonal, Rabbit,IgG
Purification	The antibody was affinity-purified from rabbit serum by affinity-chromatography using specific immunogen.
Dilution	WB 1: 500-2000
Concentration	1 mg/ml
Purity	≥90%
Storage Stability	-20°C/1 year
Synonyms	
Observed Band	
Cell Pathway	Nucleus .
Tissue Specificity	Ubiquitously expressed, strongest expression in the spinal cord and brainstem.
Function	catalytic activity:RNA processing activity that hydrolyzes the 2'-5' phosphodiester linkage at the branchpoint of excised intron lariats.,cofactor:Divalent metal cations.,function:Cleaves the 2'-5' phosphodiester linkage at the branch point of lariat intron pre-mRNAs after splicing and converts them into linear molecules that are subsequently degraded. It thereby facilitates ribonucleotide turnover. It may also participate in retrovirus replication via a RNA lariat intermediate in cDNA synthesis.,miscellaneous:Cells lacking DBR1 show an inhibition of HIV-1 replication.,similarity:Belongs to the lariat debranching enzyme family.,
Background	The protein encoded by this gene is an RNA lariat debranching enzyme that hydrolyzes 2'′5' prime branched phosphodiester bonds. The encoded protein specifically targets the bonds at the branch point of excised lariat

Nanjing BYabscience technology Co.,Ltd



intron RNA, converting them to linear molecules that are then degraded. This protein may also be involved in retroviral replication. [provided by RefSeq, Nov 2011],

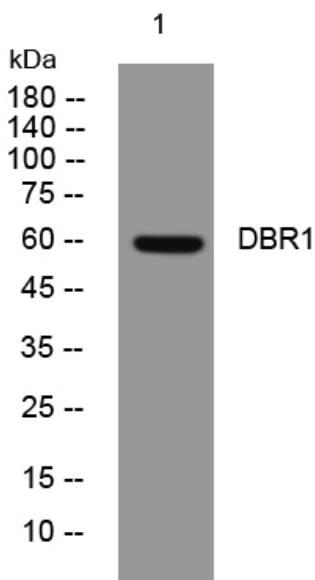
matters needing attention

Avoid repeated freezing and thawing!

Usage suggestions

This product can be used in immunological reaction related experiments. For more information, please consult technical personnel.

Products Images



Western blot analysis of lysates from SW480 cells, primary antibody was diluted at 1:1000, 4° over night