



# KHK rabbit pAb

<b>Catalog No</b>	BYab-09123
<b>Isotype</b>	IgG
<b>Reactivity</b>	Human; Mouse;Rat
<b>Applications</b>	WB
<b>Gene Name</b>	KHK
<b>Protein Name</b>	KHK
<b>Immunogen</b>	Synthesized peptide derived from human KHK AA range: 102-152
<b>Specificity</b>	This antibody detects endogenous levels of KHK at Human/Mouse/Rat
<b>Formulation</b>	Liquid in PBS containing 50% glycerol, 0.5% BSA and 0.02% sodium azide.
<b>Source</b>	Polyclonal, Rabbit,IgG
<b>Purification</b>	The antibody was affinity-purified from rabbit serum by affinity-chromatography using specific immunogen.
<b>Dilution</b>	WB 1: 500-2000
<b>Concentration</b>	1 mg/ml
<b>Purity</b>	≥90%
<b>Storage Stability</b>	-20°C/1 year
<b>Synonyms</b>	
<b>Observed Band</b>	
<b>Cell Pathway</b>	cytoplasm,cytosol,extracellular exosome,
<b>Tissue Specificity</b>	Most abundant in liver, kidney, gut, spleen and pancreas. Low levels also found in adrenal, muscle, brain and eye.
<b>Function</b>	catalytic activity:ATP + D-fructose = ADP + D-fructose 1-phosphate.,caution:Form C has not yet been fully sequenced in its N-terminal (from 1-69).,disease:Defects in KHK are the cause of fructosuria [MIM:229800]. Fructosuria is a benign defect of intermediary metabolism.,enzyme regulation:Requires potassium. Inhibition by ADP.,pathway:Carbohydrate metabolism; fructose metabolism.,similarity:Belongs to the carbohydrate kinase pfkB family.,subunit:Dimer of A-A, A-C or C-C.,tissue specificity:Most abundant in liver, kidney, gut, spleen and pancreas. Low levels also found in adrenal, muscle, brain and eye.,
<b>Background</b>	This gene encodes ketohexokinase that catalyzes conversion of fructose to fructose-1-phosphate. The product of this gene is the first enzyme with a specialized pathway that catabolizes dietary fructose. Alternatively spliced

Nanjing BYabscience technology Co.,Ltd



transcript variants encoding different isoforms have been identified. [provided by RefSeq, Jul 2008],

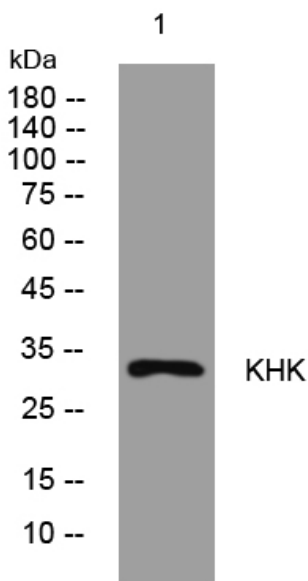
**matters needing attention**

Avoid repeated freezing and thawing!

**Usage suggestions**

This product can be used in immunological reaction related experiments. For more information, please consult technical personnel.

## Products Images



Western blot analysis of lysates from HpeG2 cells, primary antibody was diluted at 1:1000, 4° over night