



BYab-09117

G3ST3 rabbit pAb

Catalog No	BYab-09116
Isotype	IgG
Reactivity	Human; Mouse
Applications	WB
Gene Name	GAL3ST3
Protein Name	G3ST3
Immunogen	Synthesized peptide derived from human G3ST3 AA range: 191-241
Specificity	This antibody detects endogenous levels of G3ST3 at Human/Mouse
Formulation	Liquid in PBS containing 50% glycerol, 0.5% BSA and 0.02% sodium azide.
Source	Polyclonal, Rabbit,IgG
Purification	The antibody was affinity-purified from rabbit serum by affinity-chromatography using specific immunogen.
Dilution	WB 1: 500-2000
Concentration	1 mg/ml
Purity	≥90%
Storage Stability	-20°C/1 year
Synonyms	
Observed Band	
Cell Pathway	Golgi apparatus, Golgi stack membrane ; Single-pass type II membrane protein .
Tissue Specificity	Highly expressed in thyroid, brain, kidney, heart and spinal cord.
Function	cofactor:Magnesium.,function:Transfers a sulfate to position 3 of non-reducing beta-galactosyl residues in N-glycans and core2-branched O-glycans. Has high activity towards Gal-beta-1,4-GlcNAc, Gal-beta-1,4(Fuc-alpha-1,3)GlcNAc and lower activity towards Gal-beta-1,3(Fuc-alpha-1,4)GlcNAc.,online information:GlycoGene database,pathway:Protein modification; carbohydrate sulfation.,similarity:Belongs to the galactose-3-O-sulfotransferase family.,tissue specificity:Highly expressed in thyroid, brain, kidney, heart and spinal cord.,

Nanjing BYabscience technology Co.,Ltd



Background

This gene encodes a member of the galactose-3-O-sulfotransferase protein family. The product of this gene catalyzes sulfonation by transferring a sulfate group to the 3' position of galactose in N-acetyllactosamine in both type 2 (Gal-beta-1-4GlcNAc-R) oligosaccharides and core-2-branched O-glycans, but not on type 1 or core-1-branched structures. This gene, which has also been referred to as GAL3ST2, is different from the GAL3ST2 gene located on chromosome 2 that encodes a related enzyme with distinct tissue distribution and substrate specificities, compared to galactose-3-O-sulfotransferase 3. [provided by RefSeq, Jul 2008],

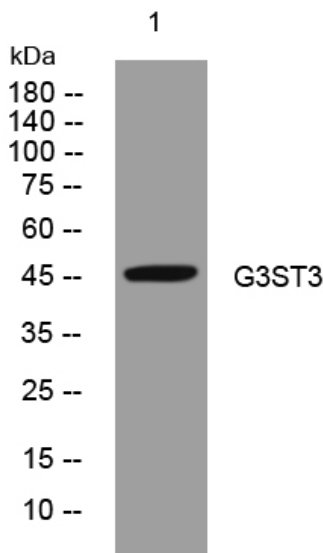
matters needing attention

Avoid repeated freezing and thawing!

Usage suggestions

This product can be used in immunological reaction related experiments. For more information, please consult technical personnel.

Products Images



Western blot analysis of lysates from HCT116 cells, primary antibody was diluted at 1:1000, 4° over night