



PRDM5 rabbit pAb

Catalog No	BYab-09113
Isotype	IgG
Reactivity	Human; Mouse
Applications	WB
Gene Name	PRDM5 PFM2
Protein Name	PRDM5
Immunogen	Synthesized peptide derived from human PRDM5 AA range: 31-81
Specificity	This antibody detects endogenous levels of PRDM5 at Human/Mouse
Formulation	Liquid in PBS containing 50% glycerol, 0.5% BSA and 0.02% sodium azide.
Source	Polyclonal, Rabbit,IgG
Purification	The antibody was affinity-purified from rabbit serum by affinity-chromatography using specific immunogen.
Dilution	WB 1: 500-2000
Concentration	1 mg/ml
Purity	≥90%
Storage Stability	-20°C/1 year
Synonyms	
Observed Band	
Cell Pathway	Nucleus .
Tissue Specificity	Widely expressed with highest levels in colon and ovary. Tends to be silenced in breast, colorectal, gastric and liver cancer tissues.
Function	function:May be involved in transcriptional regulation.,similarity:Contains 1 SET domain.,similarity:Contains 16 C2H2-type zinc fingers.,
Background	The protein encoded by this gene is a transcription factor of the PR-domain protein family. It contains a PR-domain and multiple zinc finger motifs. Transcription factors of the PR-domain family are known to be involved in cell differentiation and tumorigenesis. [provided by RefSeq, Jul 2008],
matters needing attention	Avoid repeated freezing and thawing!

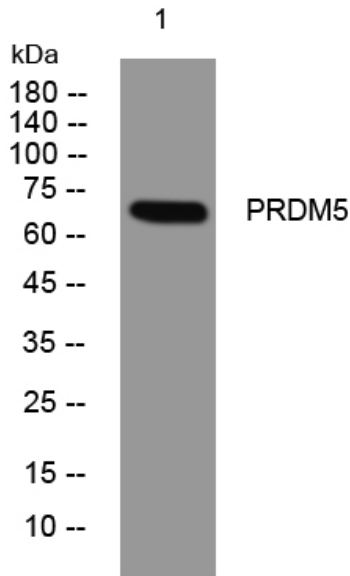
Nanjing BYabscience technology Co.,Ltd



Usage suggestions

This product can be used in immunological reaction related experiments. For more information, please consult technical personnel.

Products Images



Western blot analysis of lysates from KB cells, primary antibody was diluted at 1:1000, 4° over night