



PMCH Polyclonal Antibody

Catalog No	BYab-10724
Isotype	IgG
Reactivity	Human;Mouse;Rat
Applications	IHC;IF;ELISA
Gene Name	PMCH MCH
Protein Name	Pro-MCH [Cleaved into: Neuropeptide-glycine-glutamic acid (NGE) (Neuropeptide G-E); Neuropeptide-glutamic acid-isoleucine (NEI) (Neuropeptide E-I); Melanin-concentrating hormone (MCH)]
Immunogen	Synthetic peptide from human protein at AA range: 112-161
Specificity	The antibody detects endogenous PMCH
Formulation	Liquid in PBS containing 50% glycerol, 0.5% BSA and 0.02% sodium azide.
Source	Polyclonal, Rabbit,IgG
Purification	The antibody was affinity-purified from rabbit antiserum by affinity-chromatography using epitope-specific immunogen.
Dilution	IHC-p 1:50-200, ELISA 1:10000-20000. IF 1:50-200
Concentration	1 mg/ml
Purity	≥90%
Storage Stability	-20°C/1 year
Synonyms	Pro-MCH [Cleaved into: Neuropeptide-glycine-glutamic acid (NGE;Neuropeptide G-E); Neuropeptide-glutamic acid-isoleucine (NEI;Neuropeptide E-I); Melanin-concentrating hormone (MCH)]
Observed Band	
Cell Pathway	Secreted.
Tissue Specificity	Predominantly expressed in lateral hypothalamus, also detected in pallidum, neocortex and cerebellum. Also found in thymus, brown adipose tissue, duodenum and testis (spermatogonia, early spermatocytes and Sertoli cells). No expression in peripheral blood. In brain exclusively mature MCH and NEI peptides are present. In peripheral tissues a large product, encompassing the NEI and MCH domains of the precursor, is found predominantly.
Function	function:MCH may act as a neurotransmitter or neuromodulator in a broad array of neuronal functions directed toward the regulation of goal-directed behavior, such as food intake, and general arousal. May also have a role in spermatocyte differentiation.,PTM:Differentially processed in the brain and in peripheral organs

Nanjing BYabscience technology Co.,Ltd



producing two neuropeptides; NEI and MCH. A third peptide, NGE, may also be produced. Preferential processing in neurons by prohormone convertase 2 (PC2) generates NEI. MCH is generated in neurons of the lateral hypothalamic area by several prohormone convertases including PC1/3, PC2 and PC5/6. similarity: Belongs to the melanin-concentrating hormone family. tissue specificity: Predominantly expressed in lateral hypothalamus, also detected in pallidum, neocortex and cerebellum. Also found in thymus, brown adipose tissue, duodenum and testis (spermatogonia, early spermatocytes)

Background

pro-melanin concentrating hormone (PMCH) Homo sapiens This gene encodes a preproprotein that is proteolytically processed to generate multiple protein products. These products include melanin-concentrating hormone (MCH), neuropeptide-glutamic acid-isoleucine (NEI), and neuropeptide-glycine-glutamic acid (NGE). Melanin-concentrating hormone is a 19-amino acid neuropeptide that stimulates hunger and may additionally regulate energy homeostasis, reproductive function, and sleep. Pseudogenes of this gene have been identified on chromosome 5. [provided by RefSeq, Jul 2015],

matters needing attention

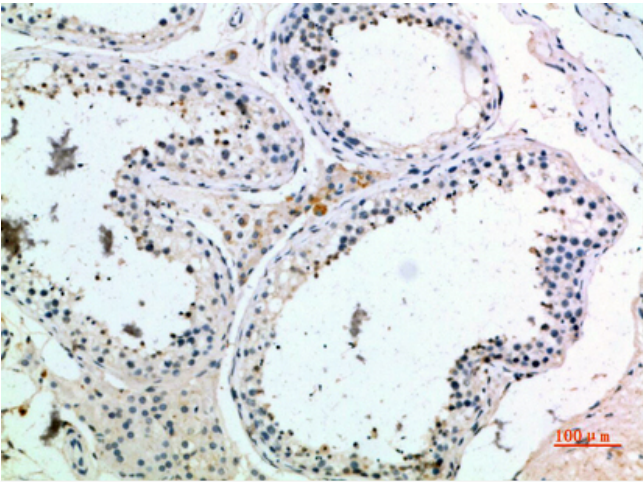
Avoid repeated freezing and thawing!

Usage suggestions

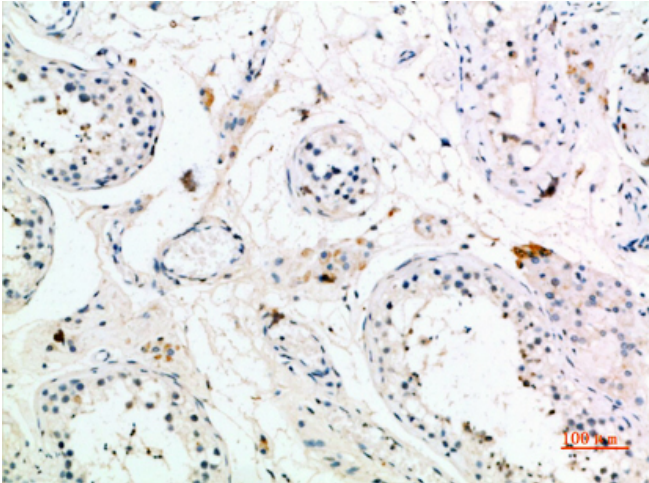
This product can be used in immunological reaction related experiments. For more information, please consult technical personnel.



Products Images



Immunohistochemical analysis of paraffin-embedded human-testis, antibody was diluted at 1:200



Immunohistochemical analysis of paraffin-embedded human-testis, antibody was diluted at 1:200