



PACAP Polyclonal Antibody

Catalog No	BYab-10720
Isotype	IgG
Reactivity	Human;Rat;Mouse;
Applications	IHC;IF;ELISA
Gene Name	PACAP HSPC190
Protein Name	Plasma cell-induced resident endoplasmic reticulum protein (Plasma cell-induced resident ER protein) (pERp1) (Proapoptotic caspase adapter protein)
Immunogen	Synthetic peptide from human protein at AA range: 1-50
Specificity	The antibody detects endogenous PACAP
Formulation	Liquid in PBS containing 50% glycerol, 0.5% BSA and 0.02% sodium azide.
Source	Polyclonal, Rabbit,IgG
Purification	The antibody was affinity-purified from rabbit antiserum by affinity-chromatography using epitope-specific immunogen.
Dilution	IHC-p 1:50-200, ELISA 1:10000-20000. IF 1:50-200
Concentration	1 mg/ml
Purity	≥90%
Storage Stability	-20°C/1 year
Synonyms	Plasma cell-induced resident endoplasmic reticulum protein (Plasma cell-induced resident ER protein;pERp1;Proapoptotic caspase adapter protein)
Observed Band	
Cell Pathway	[Isoform 1]: Endoplasmic reticulum lumen . Secreted .; [Isoform 2]: Cytoplasm . Diffuse granular localization in the cytoplasm surrounding the nucleus (PubMed:11350957).
Tissue Specificity	Widely expressed with highest levels in adult brain, small intestine and lymphoid tissues such as thymus and spleen. Expression is frequently lower in intestinal-type gastric cancer. In obese patients, more abundant in omental than in subcutaneous fat.
Function	function:May be involved in regulation of apoptosis.,induction:Down-regulated in primary B-cells early after ligand-stimulated activation.,subcellular location:In (PubMed:11350957) diffuse granular localization in the cytoplasm surrounding the nucleus.,subunit:Isoform 2 interacts with CASP2 and CASP9.,tissue specificity:Widely expressed with highest levels in adult brain. Expression is frequently lower in intestinal-type gastric cancer.,

Nanjing BYabscience technology Co.,Ltd



Background

function:May be involved in regulation of apoptosis.,induction:Down-regulated in primary B-cells early after ligand-stimulated activation.,subcellular location:In (PubMed:11350957) diffuse granular localization in the cytoplasm surrounding the nucleus.,subunit:Isoform 2 interacts with CASP2 and CASP9.,tissue specificity:Widely expressed with highest levels in adult brain. Expression is frequently lower in intestinal-type gastric cancer.,

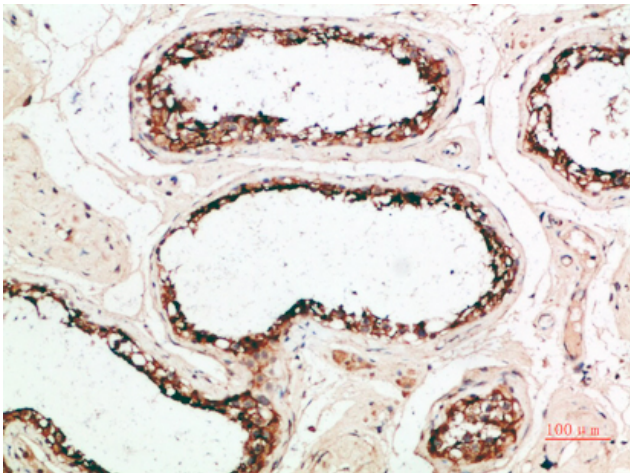
matters needing attention

Avoid repeated freezing and thawing!

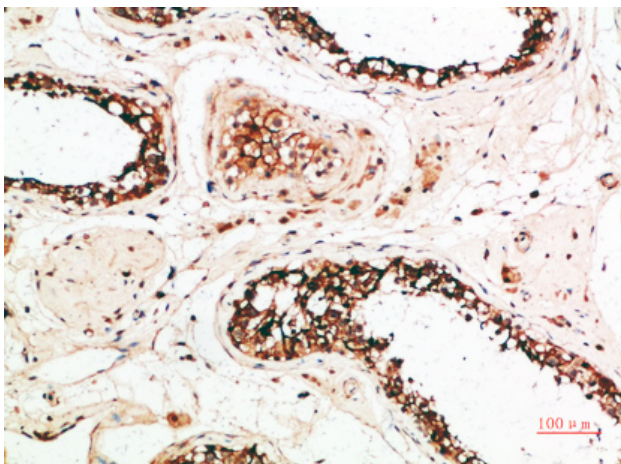
Usage suggestions

This product can be used in immunological reaction related experiments. For more information, please consult technical personnel.

Products Images



Immunohistochemical analysis of paraffin-embedded human-testis, antibody was diluted at 1:200



Immunohistochemical analysis of paraffin-embedded human-testis, antibody was diluted at 1:200