



# HSP 75 Polyclonal Antibody

|                           |   |
|---------------------------|---|
| <b>Catalog No</b>         | BYab-10714  |
| <b>Isotype</b>            | IgG   |
| <b>Reactivity</b>         | Human;Rat;Mouse;  |
| <b>Applications</b>       | IHC;IF;ELISA  |
| <b>Gene Name</b>          | TRAP1 HSP75   |
| <b>Protein Name</b>       | Heat shock protein 75 kDa, mitochondrial (HSP 75) (TNFR-associated protein 1) (Tumor necrosis factor type 1 receptor-associated protein) (TRAP-1)   |
| <b>Immunogen</b>          | The antiserum was produced against synthesized peptide derived from the Internal region of human TRAP1. AA range:481-530  |
| <b>Specificity</b>        | The antibody detects endogenous HSP 75  |
| <b>Formulation</b>        | Liquid in PBS containing 50% glycerol, 0.5% BSA and 0.02% sodium azide.   |
| <b>Source</b>             | Polyclonal, Rabbit,IgG  |
| <b>Purification</b>       | The antibody was affinity-purified from rabbit antiserum by affinity-chromatography using epitope-specific immunogen.   |
| <b>Dilution</b>           | IHC-p 1:50-200, ELISA 1:10000-20000. IF 1:50-200  |
| <b>Concentration</b>      | 1 mg/ml   |
| <b>Purity</b>             | ≥90%  |
| <b>Storage Stability</b>  | -20°C/1 year  |
| <b>Synonyms</b>           | Heat shock protein 75 kDa, mitochondrial (HSP 75;TNFR-associated protein 1;Tumor necrosis factor type 1 receptor-associated protein;TRAP-1)   |
| <b>Observed Band</b>      |   |
| <b>Cell Pathway</b>       | Mitochondrion . Mitochondrion inner membrane . Mitochondrion matrix .   |
| <b>Tissue Specificity</b> | Found in skeletal muscle, liver, heart, brain, kidney, pancreas, lung, placenta and bladder. Expression is highly reduced in bladder cancer and renal cell carcinoma specimens compared to healthy tissues, but it is increased in other type of tumors.  |
| <b>Function</b>           | function:Chaperone that expresses an ATPase activity.,similarity:Belongs to the heat shock protein 90 family.,subunit:Binds to the intracellular domain of tumor necrosis factor type 1 receptor. Binds to RB1.,tissue specificity:Found in skeletal muscle, liver, heart, brain, kidney, pancreas, lung and placenta.,                 |
| <b>Background</b>         | This gene encodes a mitochondrial chaperone protein that is member of the heat shock protein 90 (HSP90) family. The encoded protein has ATPase activity and interacts with tumor necrosis factor type I. This protein may function in regulating cellular stress responses. Alternate splicing results in multiple transcript variants. |

Nanjing BYabscience technology Co.,Ltd



[provided by RefSeq, Jan 2013],

**matters needing attention**

Avoid repeated freezing and thawing!

**Usage suggestions**

This product can be used in immunological reaction related experiments. For more information, please consult technical personnel.

Nanjing BYabscience technology Co.,Ltd

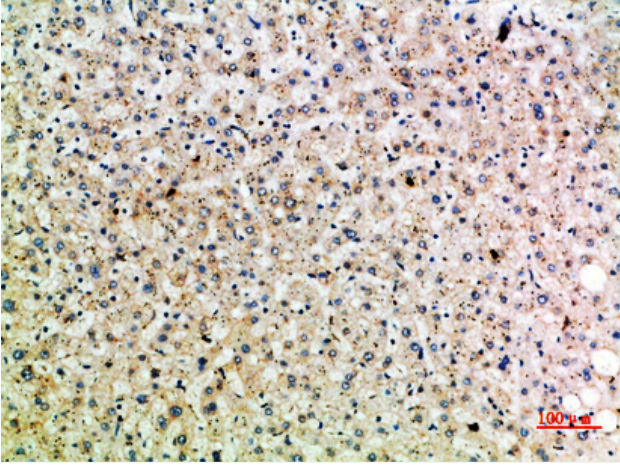
网址: [www.njbybio.com](http://www.njbybio.com)

官方热线: 025-5229-8998

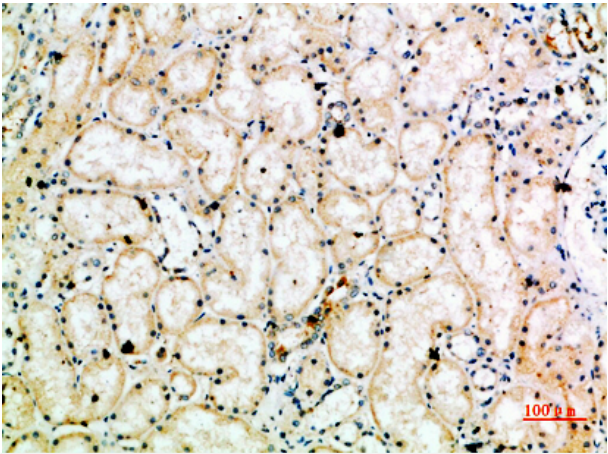
监督电话: 15950492658



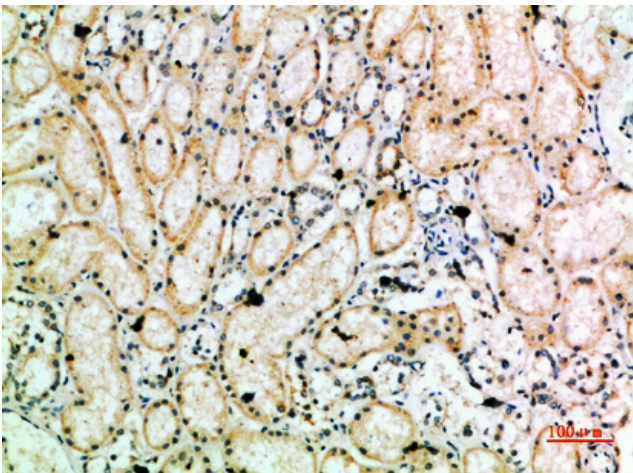
## Products Images



Immunohistochemical analysis of paraffin-embedded human-liver, antibody was diluted at 1:200



Immunohistochemical analysis of paraffin-embedded human-kidney, antibody was diluted at 1:200



Immunohistochemical analysis of paraffin-embedded human-kidney, antibody was diluted at 1:200