



Thyroglobulin Polyclonal Antibody

Catalog No	BYab-10710
Isotype	IgG
Reactivity	Human;Mouse;Rat
Applications	IHC;IF;ELISA
Gene Name	TG
Protein Name	Thyroglobulin (Tg)
Immunogen	Synthetic peptide from human protein at AA range: 2511-2560
Specificity	The antibody detects endogenous Thyroglobulin
Formulation	Liquid in PBS containing 50% glycerol, 0.5% BSA and 0.02% sodium azide.
Source	Polyclonal, Rabbit,IgG
Purification	The antibody was affinity-purified from rabbit antiserum by affinity-chromatography using epitope-specific immunogen.
Dilution	IHC-p 1:50-200, ELISA 1:10000-20000. IF 1:50-200
Concentration	1 mg/ml
Purity	≥90%
Storage Stability	-20°C/1 year
Synonyms	Thyroglobulin (Tg)
Observed Band	
Cell Pathway	Secreted . Secreted into the thyroid follicle lumen (PubMed:19509106). Localizes to colloid globules, a structure formed in the thyroid follicle lumen consisting of cross-linked TG arranged in concentric layers (PubMed:8626858, PubMed:11082042). .
Tissue Specificity	Specifically expressed in the thyroid gland.
Function	disease:Defects in TG are a cause of some forms of goiter [MIM:188450]. Goiter is an enlargement of the thyroid gland. This is sometimes linked to hypothyroidism.,disease:Variations in TG are associated with susceptibility to autoimmune thyroid disease type 3 (AITD3) [MIM:608175]. AITDs including Graves disease (GD) and Hashimoto thyroiditis (HT), are among the most common human autoimmune diseases. They are complex diseases, which are caused by an interaction between susceptibility genes and nongenetic factors, such as infection.,function:Precursor of the iodinated thyroid hormones thyroxine (T4) and triiodothyronine (T3).,online information:Thyroglobulin entry,PTM:Sulfated.,similarity:Belongs to the type-B carboxylesterase/lipase

Nanjing BYabscience technology Co.,Ltd



family.,similarity:Contains 11 thyroglobulin type-1 domains.,subunit:Homodimer.,tissue specificity:Thyroid gland specific.,

Background

Thyroglobulin (Tg) is a glycoprotein homodimer produced predominantly by the thyroid gland. It acts as a substrate for the synthesis of thyroxine and triiodothyronine as well as the storage of the inactive forms of thyroid hormone and iodine. Thyroglobulin is secreted from the endoplasmic reticulum to its site of iodination, and subsequent thyroxine biosynthesis, in the follicular lumen. Mutations in this gene cause thyroid dysmorphogenesis, manifested as goiter, and are associated with moderate to severe congenital hypothyroidism. Polymorphisms in this gene are associated with susceptibility to autoimmune thyroid diseases (AITD) such as Graves disease and Hashimoto thyroiditis. [provided by RefSeq, Nov 2009],

matters needing attention

Avoid repeated freezing and thawing!

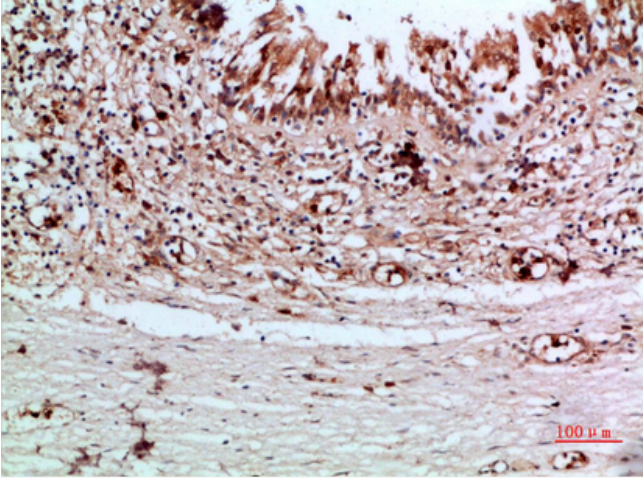
Usage suggestions

This product can be used in immunological reaction related experiments. For more information, please consult technical personnel.

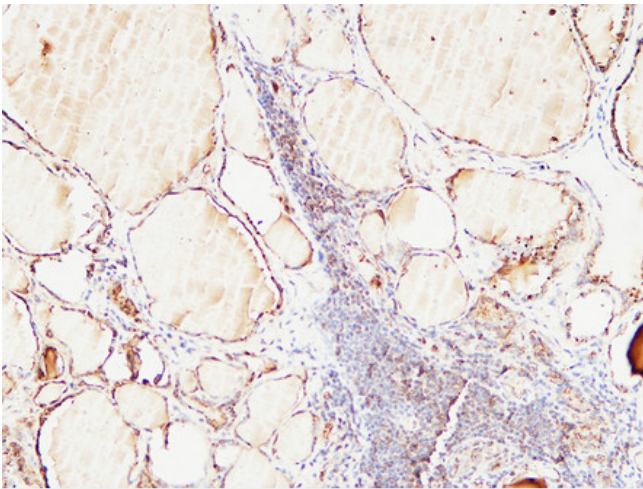
Nanjing BYabscience technology Co.,Ltd



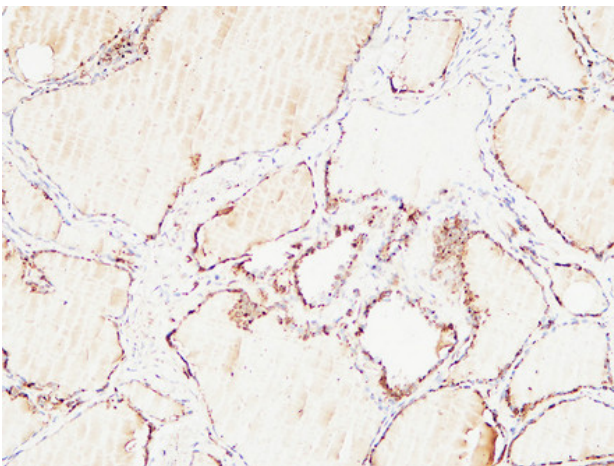
Products Images



Immunohistochemical analysis of paraffin-embedded human-thyroid, antibody was diluted at 1:200

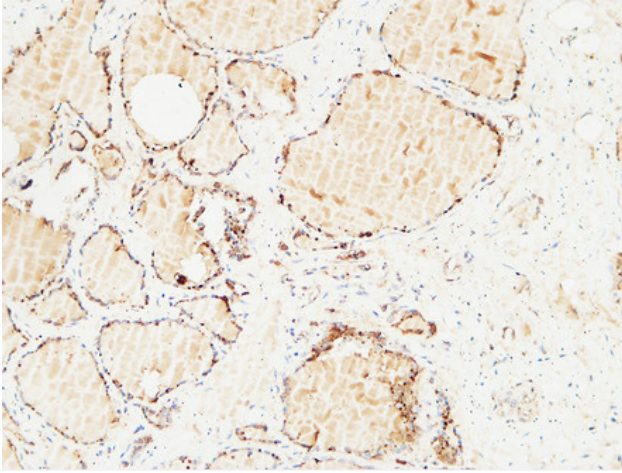


Immunohistochemical analysis of paraffin-embedded Human Thyroid. 1, Antibody was diluted at 1:200(4° overnight). 2, High-pressure and temperature EDTA, pH8.0 was used for antigen retrieval. 3, Secondary antibody was diluted at 1:200(room temperature, 30min).

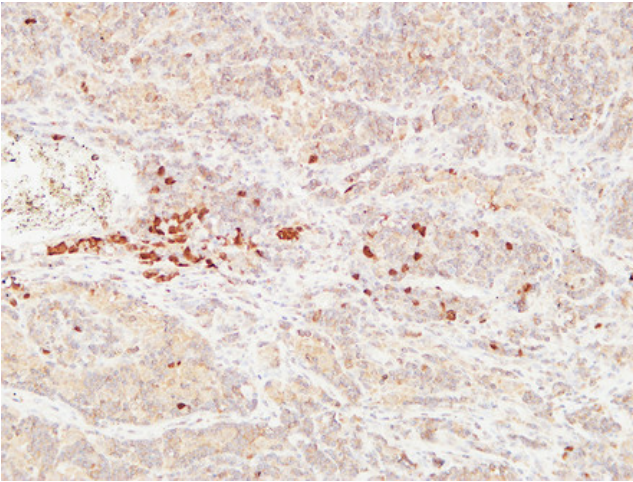


Immunohistochemical analysis of paraffin-embedded Human Thyroid. 1, Antibody was diluted at 1:200(4° overnight). 2, High-pressure and temperature EDTA, pH8.0 was used for antigen retrieval. 3, Secondary antibody was diluted at 1:200(room temperature, 30min).

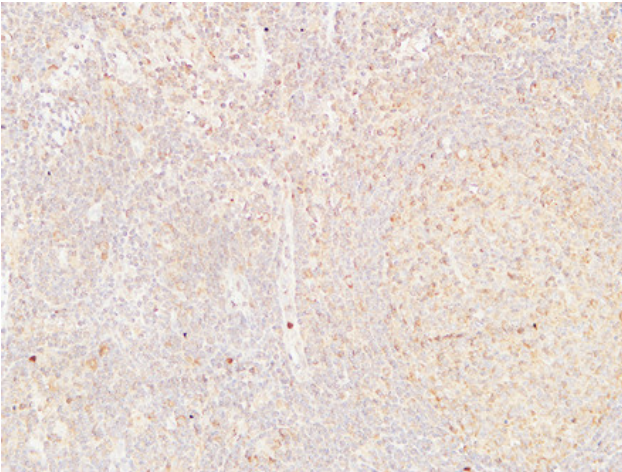
Nanjing BYabscience technology Co.,Ltd

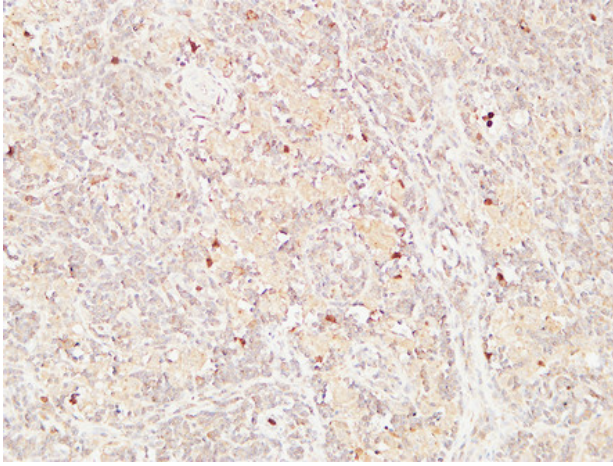


Immunohistochemical analysis of paraffin-embedded Human Thyroid. 1, Antibody was diluted at 1:200(4° overnight). 2, High-pressure and temperature EDTA, pH8.0 was used for antigen retrieval. 3, Secondary antibody was diluted at 1:200(room temperature, 30min).



Immunohistochemical analysis of paraffin-embedded Human Lymphadenocarcinoma. 1, Antibody was diluted at 1:200(4° overnight). 2, High-pressure and temperature EDTA, pH8.0 was used for antigen retrieval. 3, Secondary antibody was diluted at 1:200(room temperature, 30min).





Nanjing BYabscience technology Co.,Ltd

网址: www.njbybio.com

官方热线: 025-5229-8998

监督电话: 15950492658